

Regional Economic Indicators: Southern Flinders Ranges Region

A report prepared for
Southern Flinders Ranges Development Board Inc.

Prepared by



26 June 2007

EconSearch Pty Ltd
214 Kensington Road Marryatville SA 5068
Tel: (08) 8431 5533
Fax: (08) 8431 7710
www.econsearch.com.au

Contents

List of Tables	iv
List of Figures	iv
Abbreviations	vi
Document History and Status	vi
1. Introduction.....	1
2. Demographic Profile.....	3
2.1 Estimated Resident Population	3
2.2 Crude Birth Rates and Death Rates.....	4
2.3 Age Distribution.....	5
2.4 Population Change.....	7
3. Labour Force Indicators	10
3.1 Labour Force.....	10
3.2 Unemployment.....	11
3.3 Unemployment Rate	12
3.4 Participation Rate.....	12
4. Education and Training	14
4.1 School Students	14
4.2 Qualifications.....	14
4.3 University Enrolments	15
4.4 Contracts of Training.....	18
5. Income.....	20
5.1 Annual Taxable Income	20
5.2 Income Source	22
6. Building Approvals.....	26
7. Property Sales.....	28
7.1 Residential Sales	28
7.2 Commercial Sales.....	29
7.3 Primary Production Sales.....	29
8. Motor Vehicles.....	31
8.1 New Motor Vehicle Sales	31
8.2 Motor Vehicle Registrations	31
9. Local Government Finance	32
10. Business Registrations.....	34
11. Value of Food Production.....	36
12. Tourism	38
13. Gross Regional Product	41
References	42

List of Tables

Table 2.1	Population projections for SFR region and SA, 1996 to 2016.....	8
Table 4.1	School enrolments in the SFR region ^a (as at February), 2003 and 2004	14
Table 4.2	Highest level of qualifications for persons aged 15 and over in the SFR region ^a and SA, 1996 and 2001	15
Table 5.1	Taxable individuals and taxable income in the SFR region and SA, 1997/98 to 2003/04	20
Table 5.2	Total income and some of its components for the SFR and SA, 1997/98 to 2003/04	23
Table 8.1	Number of new motor vehicle sales in the SFR region and SA, 2001/02 and 2002/03	31
Table 8.2	Motor vehicle registrations in the SFR region and SA, 2002/03 to 2004/05	31
Table 10.1	Single location business registrations in the SFR region ^a and SA, 2001	34
Table 13.1	Gross regional production in the SFR region and SA, 2002/03 to 2004/05	41

List of Figures

Figure 1.1	The Southern Flinders Ranges region	2
Figure 2.1	Estimated resident population in the SFR region and SA, 1997/98 to 2004/05	3
Figure 2.2	Crude birth rates in the SFR region and SA, 1997/98 to 2002/03.....	4
Figure 2.3	Crude death rates in the SFR region and SA, 1997/98 to 2002/03.....	5
Figure 2.4	Proportion of population aged 0 to 14 years, 1999/00 to 2004/05	6
Figure 2.5	Proportion of population aged 15 to 64 years, 1999/00 to 2004/05	6
Figure 2.6	Proportion of population aged 65 or older, 1999/00 to 2004/05.....	7
Figure 2.7	Population projections for SFR region and SA, 1996 to 2016.....	8
Figure 3.1	Labour force in the SFR region and SA, 2002 to 2006	10
Figure 3.2	Unemployed persons in the SFR region and SA, 2002 to 2006.....	11
Figure 3.3	Unemployment rate in the SFR region and SA, 2002 to 2006	12
Figure 3.4	Participation rate in the SFR region and SA, 2000/01 to 2004/05.....	13
Figure 4.1	University enrolments by students from the SFR region and SA, 2002 to 2005	16
Figure 4.2	University enrolments by students from the SFR region, 2002 to 2005	17
Figure 4.3	University enrolments by students from South Australia, 2002 to 2005	17
Figure 4.4	Contract of training commencements in the SFR region and SA, 2000/01 to 2005/06	19
Figure 4.5	Contract of training completions in the SFR region and SA, 2000/01 to 2005/06	19
Figure 5.1	Nominal mean individual taxable income in the SFR region and SA, 1997/98 to 2003/04	21

Figure 5.2	Real mean individual taxable income in the SFR region and SA, 1997/98 to 2003/04 ^a	21
Figure 5.3	Commonwealth benefits and payments as a proportion of total income in the SFR region and SA, 1997/98 to 2003/04	24
Figure 5.4	Salaries and wages as a proportion of total income in the SFR region and SA, 1997/98 to 2003/04	24
Figure 5.5	Other income as a proportion of total income in the SFR region and SA, 1997/98 to 2003/04	25
Figure 5.6	Gross tax as a proportion of total income in the SFR region and SA, 1997/98 to 2003/04	25
Figure 6.1	Number and value of new residential dwelling approvals in the SFR region, 2001/02 to 2005/06	26
Figure 6.2	Number and value of new residential dwelling approvals in SA, 2001/02 to 2005/06	27
Figure 6.3	Average value per approval in the SFR region and SA, 2001/02 to 2005/06	27
Figure 7.1	Average value of residential property sales in the SFR region and SA, 1997/98 to 2002/03	28
Figure 7.2	Gross value of commercial property sales in the SFR region and SA, 1997/98 to 2002/03	29
Figure 7.3	Average value of primary production property sales in the SFR region and SA, 1997/98 to 2002/03	30
Figure 9.1	Outlay by local government in the SFR region, 1997/98 to 2004/05.....	32
Figure 9.2	Outlay by local government in the SA, 1997/98 to 2004/05	33
Figure 11.1	Gross value of food production in the SFR region, 2002/03 to 2004/05	36
Figure 11.2	Gross value of food production in SA, 2002/03 to 2004/05.....	37
Figure 12.1	Rooms occupied and takings in the SFR region, 2003 to 2005	38
Figure 12.2	Room occupancy rate in the SFR region and SA, 2003 to 2005.....	39
Figure 12.3	Takings per room in the SFR region and SA, 2003 to 2005.....	39

Abbreviations

ABS	Australian Bureau of Statistics
ATO	Australian Taxation Office
DEST	Department of Education, Science and Training
DECS	Department of Education and Children's Services
DEWR	Department of Employment and Workplace Relations
DFEEST	Department of Further Education, Employment, Science and Technology
fte	full-time equivalent
GSP	gross state product
GRP	gross regional product
IO	Input-Output (analysis)
PIRSA	Primary Industries and Resources South Australia.
RISE	Regional Industry Structure and Employment (impact model)
SFR	Southern Flinders Ranges
SA	South Australia

Document History and Status

Doc Ver	Doc Status	Issued To	Qty elec	Qty hard	Date	Reviewed	Approved
1	Draft	Mark Malcolm	1	-	03/08/06	MMF	JBM
2	Draft	Mark Malcolm	1	-	18/10/06	JBM	JBM
3	Final	Mark Malcolm	1	5	26/06/07	JBM	JBM

Printed: 26/06/2007 12:25:00 PM
 Last Saved: 25/06/2007 6:30:00 PM
 File Name: S:\1_Projects\Current\0526_SF Regional Indicators\Reports\SFRDB_Regional Indicators_070626.doc
 Project Manager: Julian Morison
 Principal Author/s: Lizzie Clark, Chatura Ariyaratne, Julian Morison
 Name of Client: Southern Flinders Ranges Development Board Inc.
 Name of Project: Regional Economic Indicators: Southern Flinders Ranges Region
 Document Version: 3
 Job Number: 0526

1. Introduction

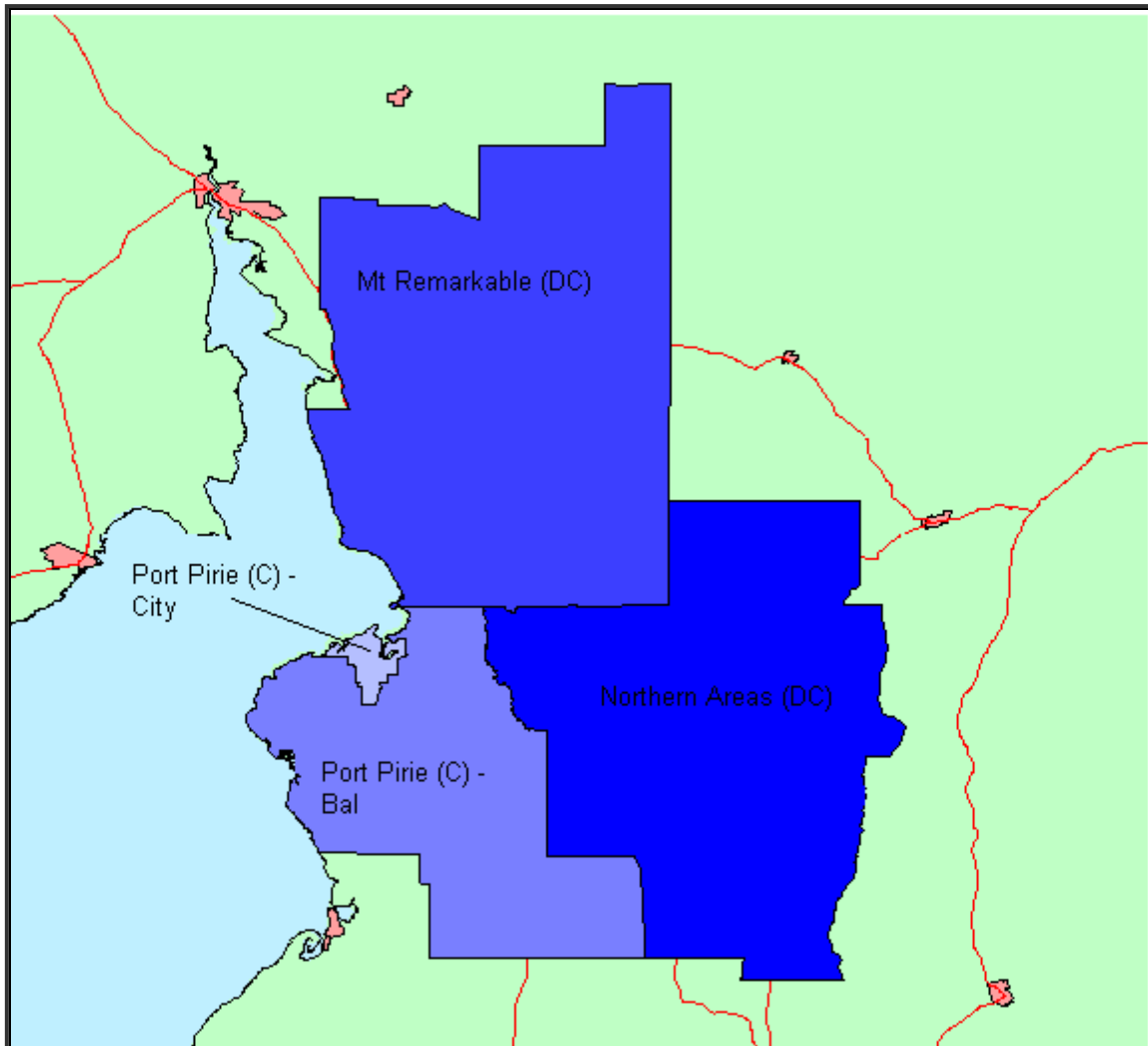
This publication presents a statistical summary of key economic and social information for the Southern Flinders Ranges (SFR) region and South Australia (SA). It brings together a wide range of existing Australian Bureau of Statistics (ABS) and some non-ABS data and has been designed, at a broad level, to assist users of regional statistics to understand the composition and economic and social structure of the region, to understand how the SFR region contributes to the state's economy and to help monitor the trends in economic growth or decline. Most data are presented for the SFR region and for SA as a whole for the purpose of comparisons. The regional economic indicators include:

- a demographic profile (Section Two);
- labour force statistics (Section Three);
- education and training statistics (Section Four);
- income data (Section Five);
- data on building approvals (Section Six);
- property sales statistics (Section Seven);
- motor vehicle data (Section Eight);
- statistics on local government finance (Section Nine);
- statistics on single location business registrations (Section Ten);
- value of agricultural production (Section Eleven);
- tourism data (Section Twelve); and
- gross regional product (Section Thirteen).

The information included in this report is historical, as well as being the latest available data at the time of preparation, enabling comparison over time. When analysing the data care needs to be taken as time periods, definitions, methodologies, scope and coverage differ between variables. For detailed information, including technical notes, please refer to the relevant source publications that are listed in the References (page 37).

The SFR region is comprised of the relatively urban and industrialised area of Port Pirie City and the primarily rural Mount Remarkable and Northern Areas Local Government Areas (Figure 1.1). The city of Port Pirie functions as an important regional centre and contains the bulk of the region's economic activities.

Figure 1.1 The Southern Flinders Ranges region



Source: ABS (2001).

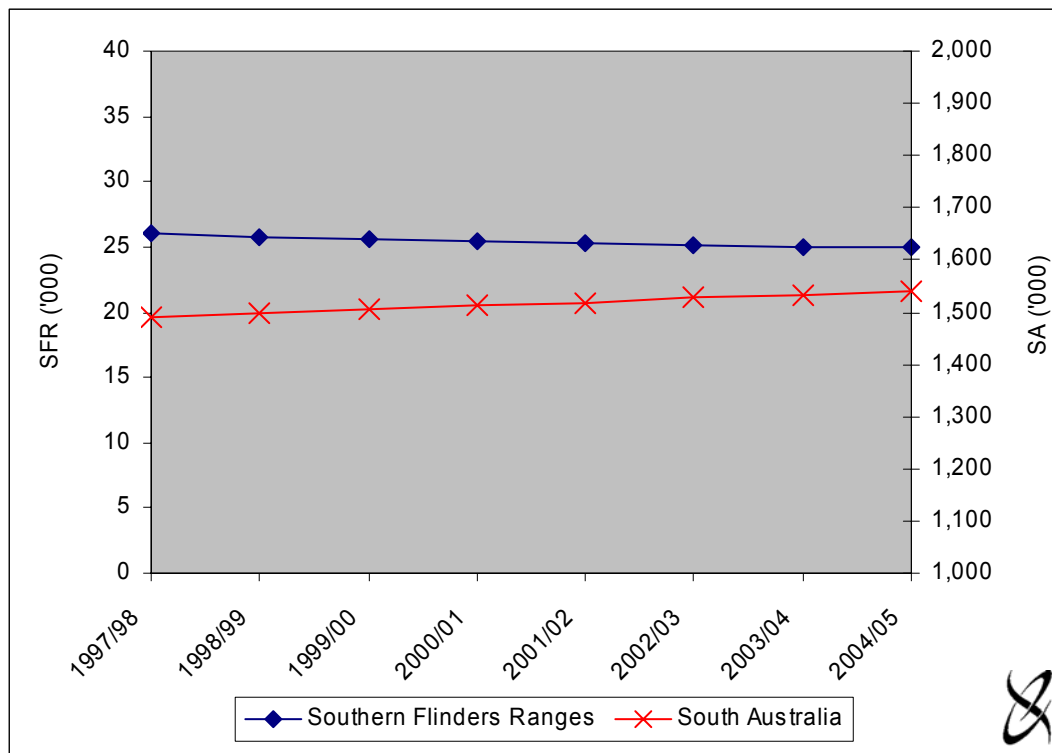
2. Demographic Profile

This section of the report provides descriptive and comparative statistics of key demographic characteristics relevant to the SFR region and SA. The key demographic characteristics include most recent annual data on estimated resident population¹ (ERP), births, deaths and population age structure.

2.1 Estimated Resident Population

The ERP for the SFR region and SA is illustrated below in Figure 2.1, for the period 1997/98 to 2004/05.

Figure 2.1 Estimated resident population in the SFR region and SA, 1997/98 to 2004/05



Source: ABS (2006a).

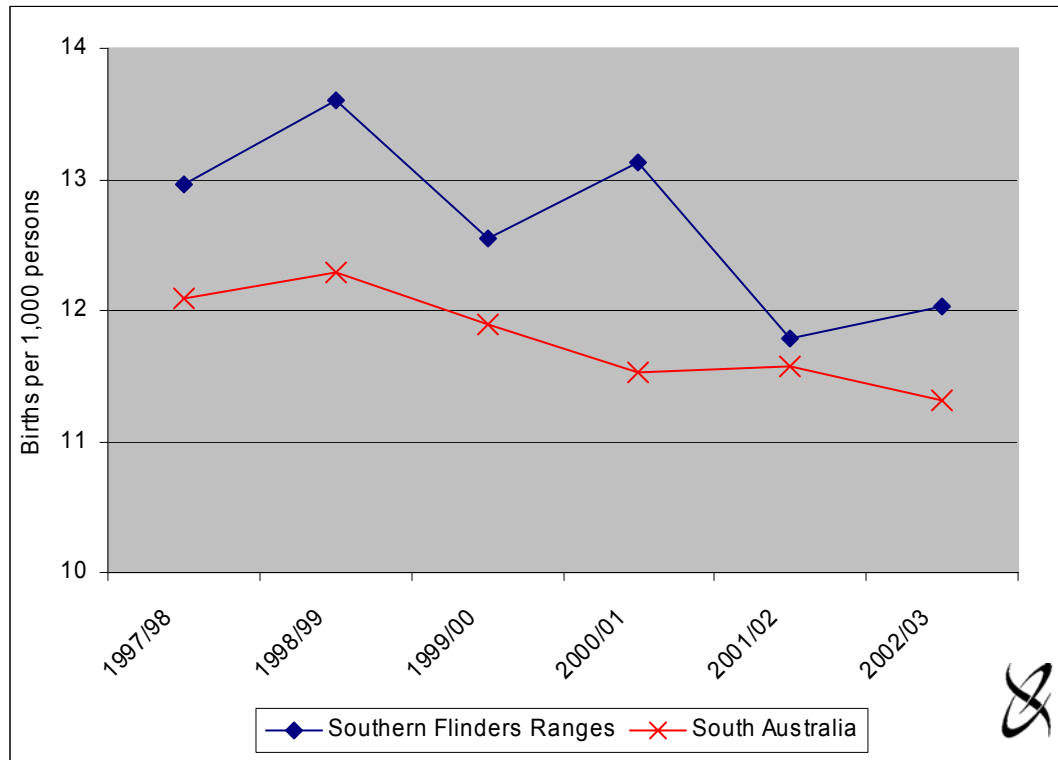
In 2004/05 the ERP in the SFR region was 24,945 persons, representing approximately 1.6 per cent of the state total (approximately 1,542,000 persons). In contrast to the steady population growth recorded for the whole of SA, over the period 1997/98 to 2003/04, the SFR region experienced steady population decline. Over the six year period, 1997/98 to 2003/04, the population in the SFR region decreased by 4 per cent (1,041 persons). This declining trend was reversed in 2004/05 when there was a small population increase (less than 1 per cent) in the SFR region.

¹ The ERP of an area is the estimate of the number of persons who usually reside in that area irrespective of where they were on the date of the estimate. The ERP is the official ABS population figure and is calculated adjusting the results of the latest Census on Population and Housing.

2.2 Crude Birth Rates and Death Rates

The crude birth² and death rates³ for the period 1997/98 to 2002/03 for the SFR region and SA are illustrated in Figures 2.2 and 2.3, respectively.

Figure 2.2 Crude birth rates in the SFR region and SA, 1997/98 to 2002/03



Source: ABS (2005a).

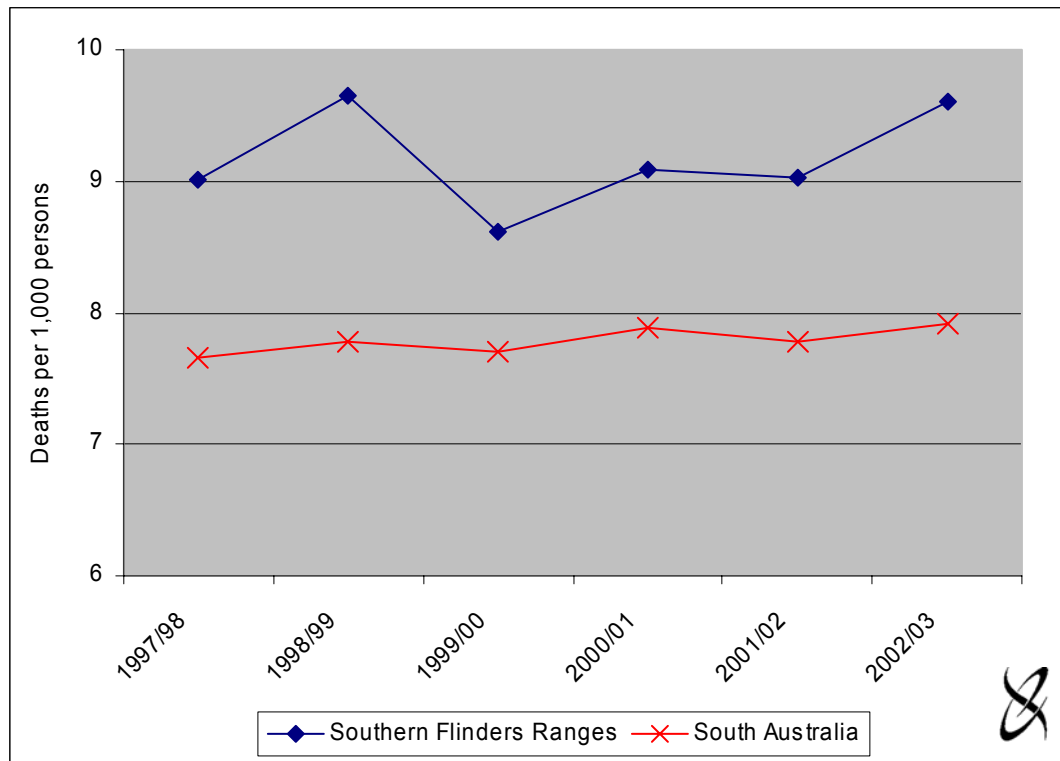
The number of births in the SFR region fell from 337 in 1997/98 to 302 in 2002/03. Accordingly, the crude birth rate in the SFR region fell from 13.0 to 12.0 over the same period. The number of births in SA fell from 18,005 in 1997/98 to 17,286 in 2002/03. The crude birth rate for SA fell from 12.1 to 11.3 over the 5 year period (Figure 2.2).

The annual number of deaths in the SFR region remained relatively unchanged over the 6 years to 2002/03. In 1997/98, there were 234 deaths in the region, while in 2002/03 there were 241. Accordingly, the crude death rate in the SFR region remained relatively stable, fluctuating between 8.6 and 9.6. In SA the total number of deaths and the death rate followed an increasing trend. In 1997/98 there were 11,418 deaths in South Australia, by 2002/03 this had increased to 12,088. The crude death rate for SA also increased from 7.7 in 1997/98 to 7.9 in 2002/03 (Figure 2.3).

² The crude birth rate is the number of live births registered in the 12 months ending 30 June per 1,000 residents. The number of residents is equivalent to the ERP.

³ The crude death rate is the number of deaths registered in the 12 months ending 30 June per 1,000 residents. The number of residents is equivalent to the ERP.

Figure 2.3 Crude death rates in the SFR region and SA, 1997/98 to 2002/03



Source: ABS (2005a).

It is worth noting that, while the death rate in the SFR has been relatively constant over the 5 year period 1997/98 to 2002/03, the birth rate has declined. Consequently, the rate of natural increase has also declined. The SFR region has consistently recorded crude birth rates and crude death rates higher than the SA averages over the five year period (Figures 2.2 and 2.3). The continuing strong trend in negative net migration in the SFR region has negated any natural increase, and the population has steadily declined (Figure 2.1).

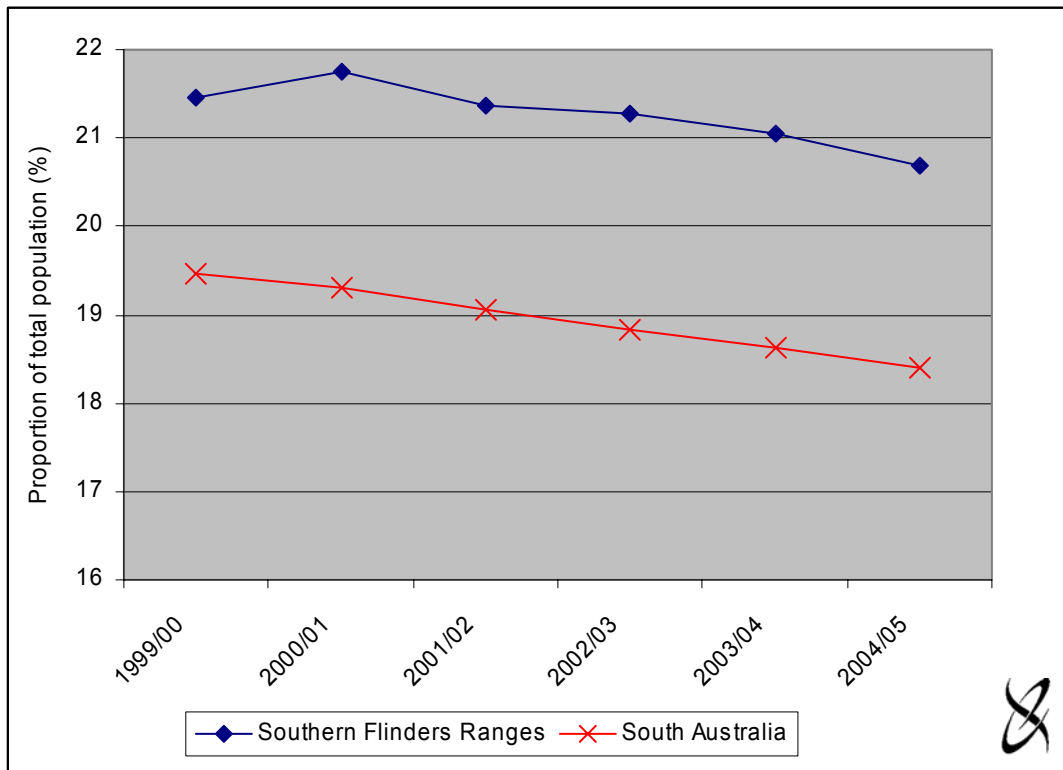
2.3 Age Distribution

The age structures of the population for the SFR region and SA are illustrated in Figures 2.4 and 2.5 respectively.

The age distribution in the SFR region reflects the high birth rate identified above. In 2004/05, just over 20 per cent of the regions population was under the age of 15 years, the majority of the population (approximately 62 per cent) was aged between 15 and 64 years and approximately 18 per cent of the population were aged over 65 years.

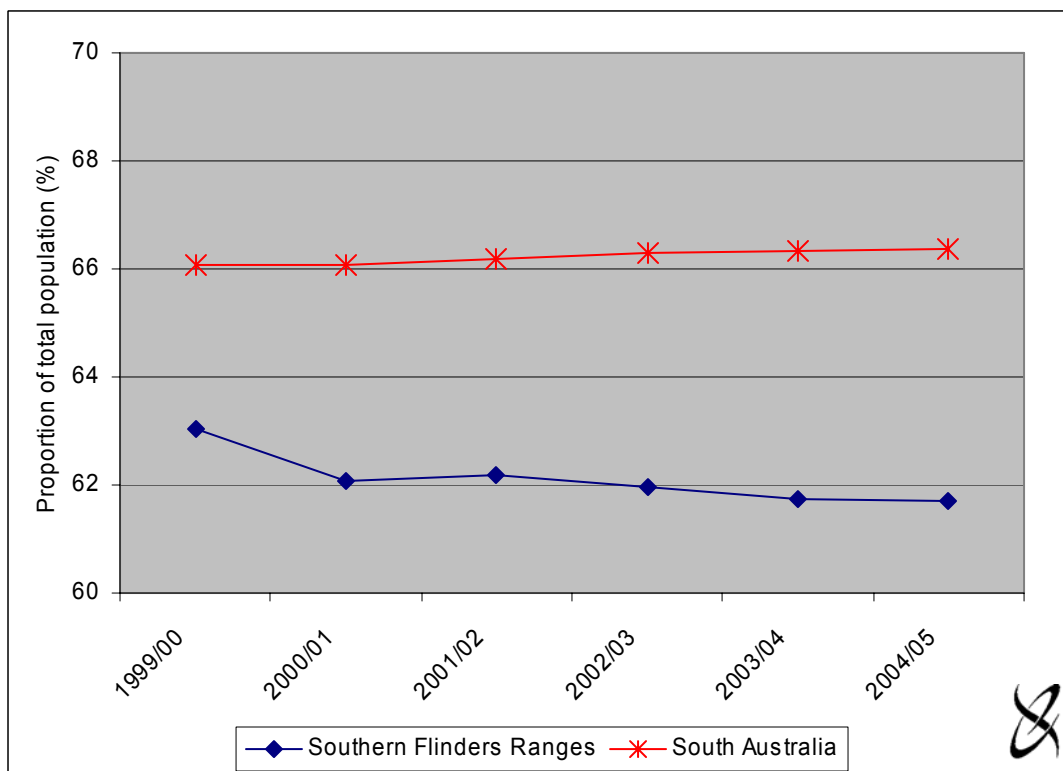
Compared with the age distribution of the state, the SFR region has a higher concentration of both younger people (aged 0 to 14 years) and people aged 65 and over and, consequently, a lower than average share of persons aged 15 to 64 years. This latter group could be characterised as the working-age population.

Figure 2.4 Proportion of population aged 0 to 14 years, 1999/00 to 2004/05



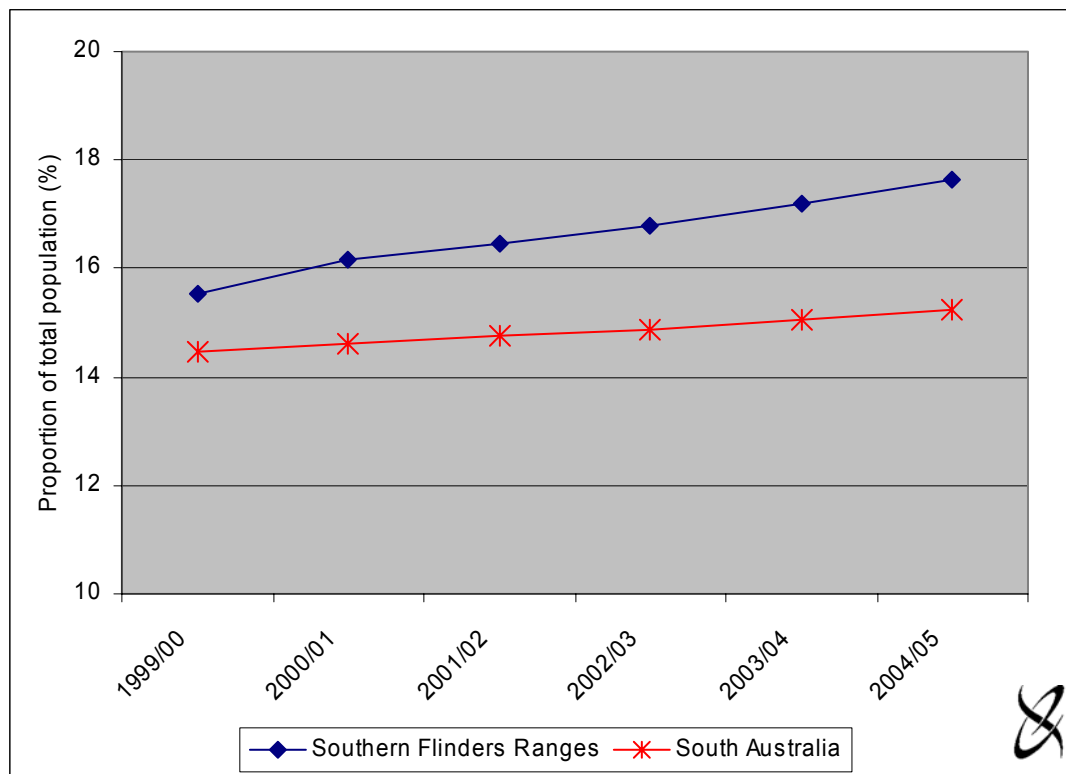
Source: ABS (2006b).

Figure 2.5 Proportion of population aged 15 to 64 years, 1999/00 to 2004/05



Source: ABS (2006b).

Figure 2.6 Proportion of population aged 65 or older, 1999/00 to 2004/05



Source: ABS (2006b).

The age structure of the population in the SFR region has remained relatively constant over the 5 year period to 2004/05. There has been a slight decrease in the proportion of the population in the first two age groups and a slight increase in the proportion of the population aged over 65 years. In SA as a whole, there has been a slight decrease in the proportion of population aged between 0 and 14 years and a slight increase in the other age groups (Figures 2.4 and 2.5).

2.4 Population Change

It is possible to derive broad population projections for the SFR region and SA for the period 2001 to 2016 based on information published by Planning SA. Population projections for the SFR region and SA, for the period 1996 to 2016 are detailed in Table 2.1 and illustrated in Figure 2.6.

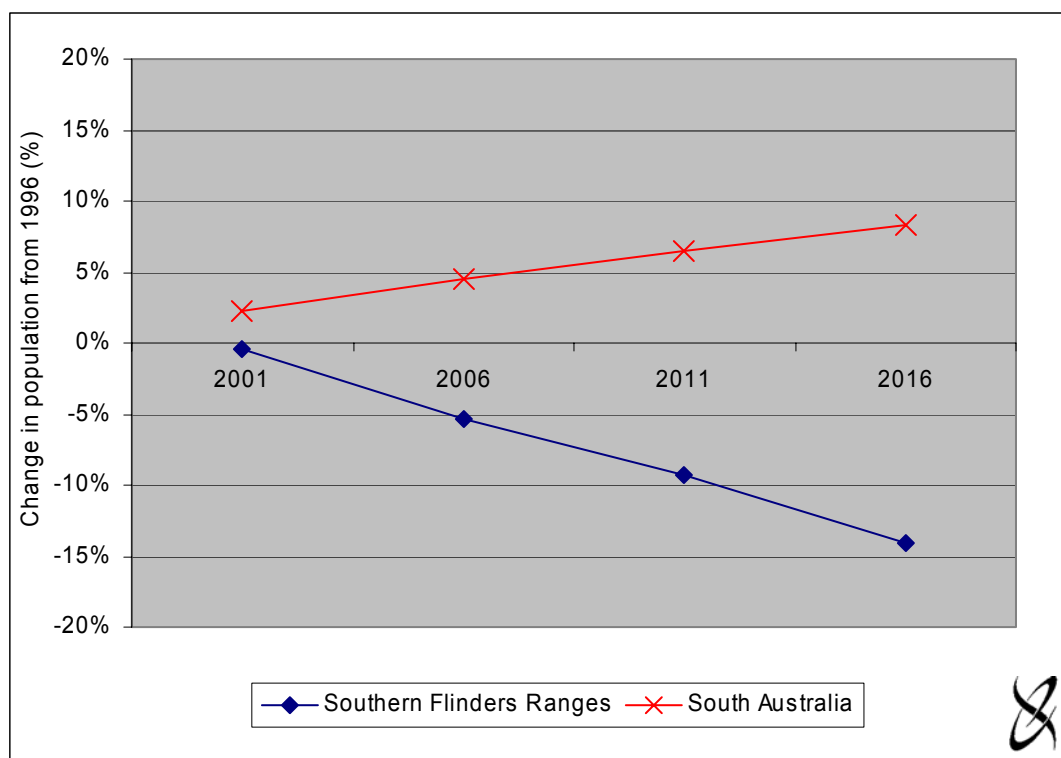
The projections are based on ABS 2001 Census resident population estimates and trends in mortality, fertility and overseas and interstate migration for the period 1991 to 1996. The method used to compile the projections was not influenced by local factors such as land availability or zoning; it assumes that these factors would not place limitations on population growth (Ian McQueen, Planning SA, pers. comm.).

Table 2.1 Population projections for SFR region and SA, 1996 to 2016

Age	1996	2001	2006		2011		2016		
	Population	Population	Change from 1996	Population	Change from 1996	Population	Change from 1996	Population	Change from 1996
	no.	no.	%	no.	%	no.	%	no.	%
SFR									
0-14	1,298	1,203	-7.3%	1,039	-20.0%	939	-27.7%	861	-33.7%
15-64	14,099	13,937	-1.1%	13,155	-6.7%	12,282	-12.9%	11,140	-21.0%
65+	2,615	2,784	6.5%	2,843	8.7%	3,106	18.8%	3,478	33.0%
Total	18,012	17,924	-0.5%	17,037	-5.4%	16,327	-9.4%	15,479	-14.1%
SA									
0-14	97,658	93,220	-4.5%	89,998	-7.8%	88,050	-9.8%	87,533	-10.4%
15-64	1,169,958	1,195,553	2.2%	1,218,269	4.1%	1,227,300	4.9%	1,214,002	3.8%
65+	206,637	218,400	5.7%	232,528	12.5%	255,195	23.5%	294,260	42.4%
Total	1,474,253	1,507,173	2.2%	1,540,795	4.5%	1,570,545	6.5%	1,595,795	8.2%

Source: PIRSA (2006).

Figure 2.7 Population projections for SFR region and SA, 1996 to 2016



Source: PIRSA (2006).

Based on the Planning SA projections, the population in the SFR region will decline by approximately 9 per cent over the next decade. Population projections for the age groups of 0-14 and 15-64 show a similar declining pattern to the total regional population projection trend. However, the number of persons aged over 65 is projected to grow over the next decade (Table 2.1).

Figure 2.6 highlights the contrast in projected population between the SFR region and SA. According to the Planning SA projections, the total population in the SFR region is likely to decline by just over 9 per cent over the next decade while the total SA population is likely to increase by approximately 4 per cent.

3. Labour Force Indicators

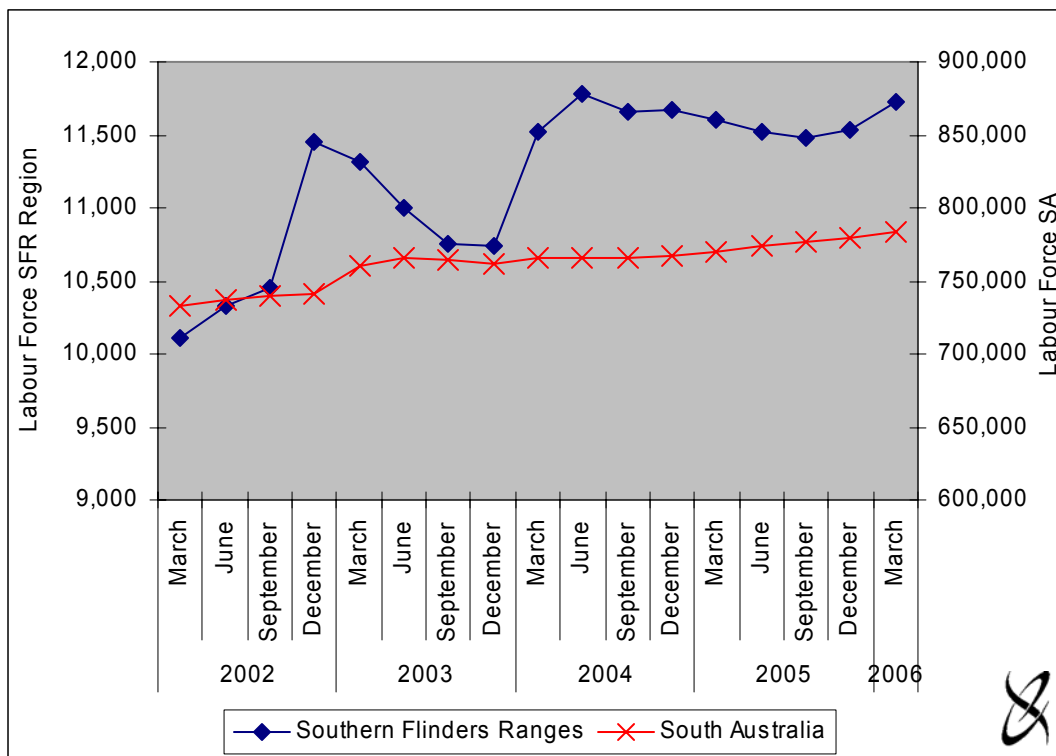
This section of the report provides descriptive and comparative statistics of the major labour force characteristics relevant to the SFR region and SA as a whole. The major labour force characteristics include:

- labour force⁴;
- number of unemployed persons;
- unemployment rate⁵; and
- participation rate⁶.

3.1 Labour Force

The total number of persons in the labour force in the SFR region and SA is illustrated in Figure 3.1 for the period March 2002 to March 2006

Figure 3.1 Labour force in the SFR region and SA, 2002 to 2006



Source: DEWR (2006).

⁴ The labour force for any group is defined as the number of persons who were employed or unemployed.

⁵ The unemployment rate for any group is defined as the number of unemployed persons expressed as a percentage of the labour force in the same group.

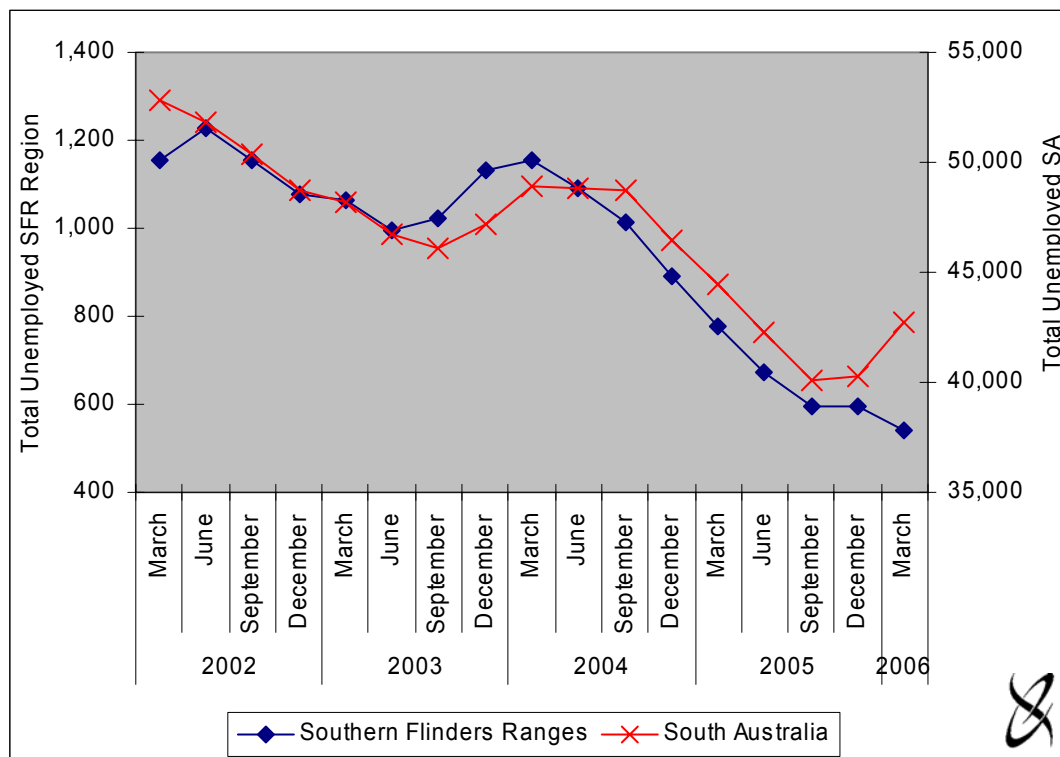
⁶ The participation rate is a measure of the total labour force as a proportion of the working age population.

The total number of persons in the labour force varied between 2002 and 2006 in both the SFR region and SA, but generally trended upwards. In March 2002, there were approximately 10,100 people in the labour force in the SFR region. This increased by approximately 16 per cent to almost 11,700 people in March 2006. The size of the labour force also increased in SA as a whole from approximately 732,900 people in March 2002 to 983,900 in March 2006, an increase of 7 per cent.

3.2 Unemployment

The number of unemployed persons in the SFR region and SA are illustrated in Figure 3.2 for the period 2002 to 2006.

Figure 3.2 Unemployed persons in the SFR region and SA, 2002 to 2006



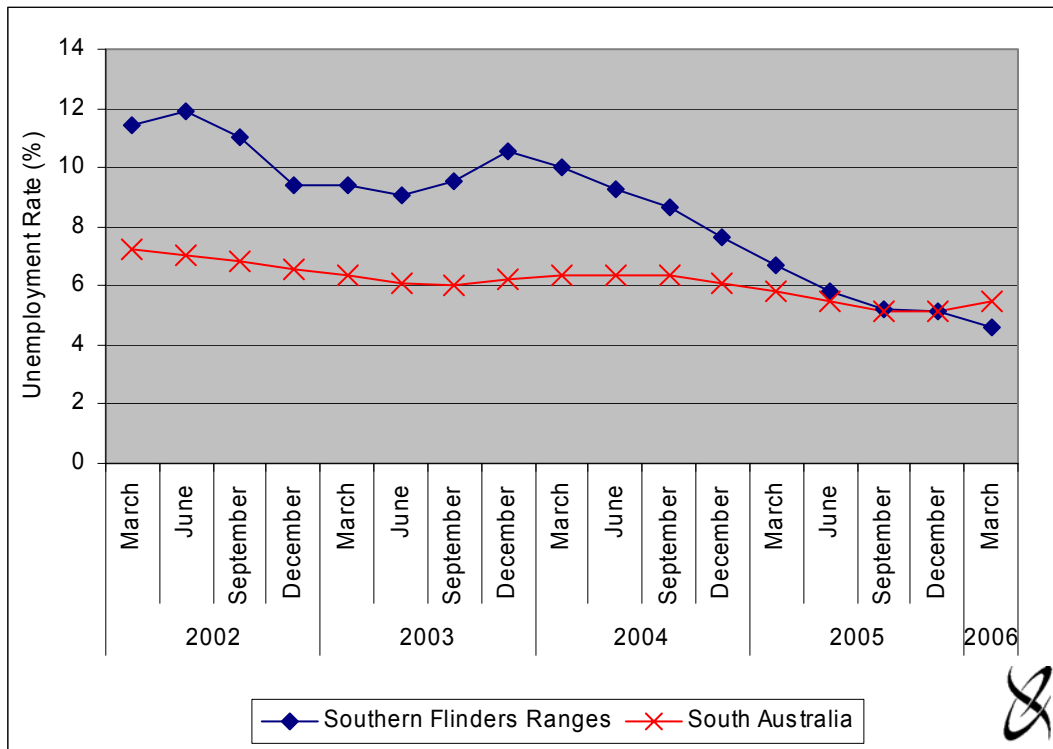
Source: DEWR (2006).

The number of unemployed persons in the SFR region decreased by approximately 53 per cent between March 2002 and 2006, from 1,155 persons in 2002 to 543 in 2006. The total number of unemployed persons also decreased in SA as a whole, from 52,800 in 2002 to 42,700 in 2006, a fall of 19 per cent.

3.3 Unemployment Rate

The unemployment rates in the SFR region and SA are illustrated in Figure 3.3 for the period 2002 to 2006.

Figure 3.3 Unemployment rate in the SFR region and SA, 2002 to 2006



Source: DEWR (2006) and EconSearch analysis.

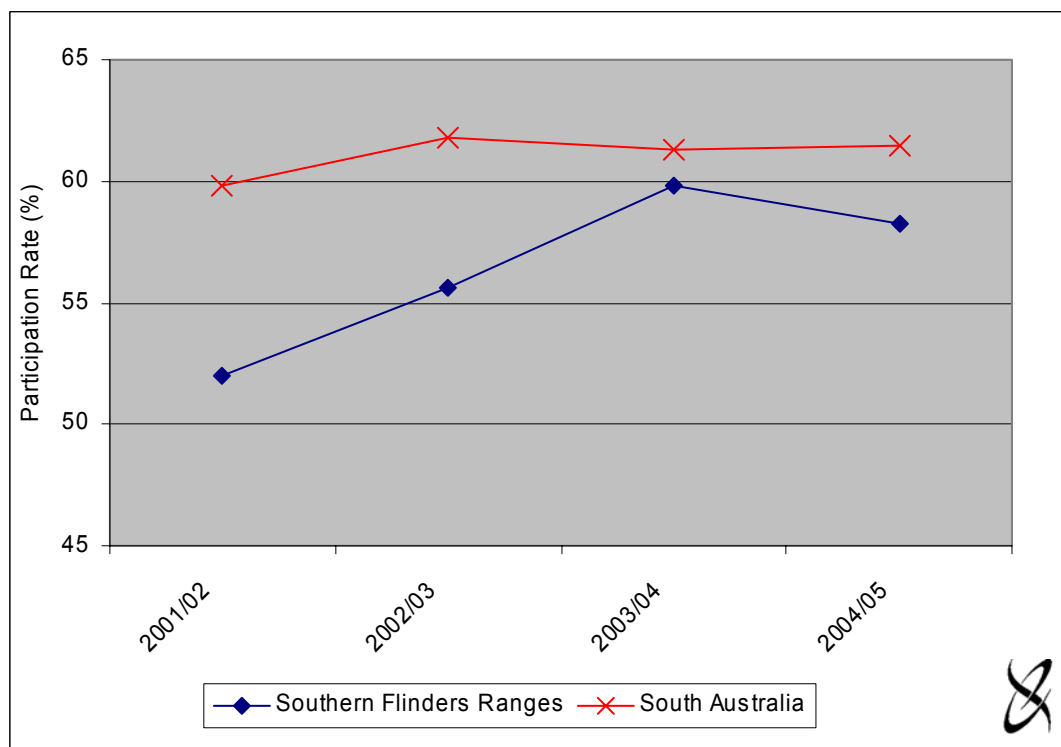
The unemployment rate has followed a declining trend over the past five years in both the SFR region and SA. The unemployment rate was at its lowest in the SFR region in March 2006 reaching 4.6 per cent. The unemployment rate reached its lowest rate in SA in September and December 2005 when it was 5.2 per cent.

3.4 Participation Rate

The participation rate for the SFR region and SA for the period 2001/02 to 2004/05 is illustrated in Figure 3.4 below.

The labour force participation rate in the SFR region has increased over the four years to 2004/05. Approximately 52 per cent of the working age population participated in the labour force in 2001/02. This increased to 60 per cent in 2003/04 before decreasing slightly (to 58 per cent) in 2004/05. Although the total number of participants in the labour force did increase over the period (by approximately 11.5 per cent), the total working age population declined slightly. This decline in population has the potential to exaggerate the magnitude of the increase in the labour force participation.

Figure 3.4 Participation rate in the SFR region and SA, 2000/01 to 2004/05



Source: DEWR (2006) and EconSearch analysis.

The labour force participation rate in SA as a whole increased slightly over the four years to 2004/05. Approximately 60 per cent of the working age population participated in the labour force in 2001/02. This increased to 62 per cent in 2002/03 before decreasing to 61 per cent in 2003/04 and 2004/05. The change in labour force participation over the three year period reflects a 7 per cent increase in the total number of participants in the labour force and a 3 per cent increase in the working age population.

The labour force participation rate was consistently higher for the whole of SA than for the SFR region, over the four years to 2004/05.

4. Education and Training

The following descriptive and comparative education and training statistics are provided for the SFR region and SA:

- primary and secondary student enrolments;
- tertiary qualifications;
- university enrolments; and
- contract of training commencements and completions.

4.1 School Students

Total enrolments for government and non-government schools located within the SFR region are detailed in Table 4.1 for the years 2003 and 2004.

Table 4.1 School enrolments in the SFR region ^a (as at February), 2003 and 2004

Year	Government schools			Non-Government schools			Total Enrolments
	Primary students	Secondary student	Total Government	Primary students	Secondary student	Total Non-Government	
2003	1,916	975	2,891	609	463	1,072	3,963
2004	1,956	943	2,899	663	470	1,133	4,032

^a Data only available for the Port Pirie City and Districts, Mount Remarkable and part of the Northern Areas LGA.

Source: DFEEST (2005).

Total enrolments in SFR schools increased by approximately 1.7 per cent between 2003 and 2004. Primary school enrolments accounted for the majority of the increase in total enrolments with enrolments increasing in both government and non-government schools. Secondary enrolment decreased in government schools by approximately 3 per cent, while non-government, secondary enrolments increased by 1.5 per cent between 2003 and 2004.

4.2 Qualifications

The level of qualification held by residents in the SFR region and SA are detailed in Table 4.2 below, for the years 1991, 1996 and 2001.

The total number of residents in the SFR region with a non-school qualification increased steadily over the three Census years. Despite this, when compared with the whole of SA, persons aged 15 and over in the SFR region had a below average level of qualifications in all three Census years, particularly for bachelor degree and higher level qualifications.

Table 4.2 Highest level of qualifications for persons aged 15 and over in the SFR region ^a and SA, 1996 and 2001

Qualification	Southern Flinders Ranges					
	1991		1996		2001	
Postgraduate Degree	25	0%	31	0%	49	0%
Graduate Diploma & Graduate Certificate	97	0%	146	1%	111	1%
Bachelor Degree	473	2%	590	3%	708	4%
Advanced Diploma & Diploma	816	4%	721	4%	546	3%
Certificate	n.a.	-	n.a.	-	61	0%
Certificate III & IV	1,743	9%	1,979	10%	2,392	13%
Certificate I & II	513	3%	529	3%	276	2%
Not stated	1,867	9%	1,841	9%	1,603	9%
Not applicable	14,225	72%	13,741	70%	12,046	68%
Total	19,759	100%	19,578	100%	17,792	100%

Qualification	South Australia					
	1991		1996		2001	
Postgraduate Degree	8,413	1%	11,632	1%	15,248	1%
Graduate Diploma & Graduate Certificate	8,596	1%	12,539	1%	14,351	1%
Bachelor Degree	52,725	5%	72,855	6%	95,840	8%
Advanced Diploma & Diploma	57,556	5%	63,420	6%	63,412	5%
Certificate	n.a.	-	n.a.	-	5,795	0%
Certificate III & IV	110,485	10%	119,024	11%	155,159	13%
Certificate I & II	36,314	3%	35,518	3%	24,303	2%
Not stated(c)	121,310	11%	118,921	11%	116,533	10%
Not applicable(d)	704,892	64%	694,480	62%	681,093	58%
Total	1,100,291	100%	1,128,389	100%	1,171,734	100%

^a Data only available for the Port Pirie City and Districts, Mount Remarkable and part of the Northern Areas LGA.

Source: DFEEST (2005).

4.3 University Enrolments

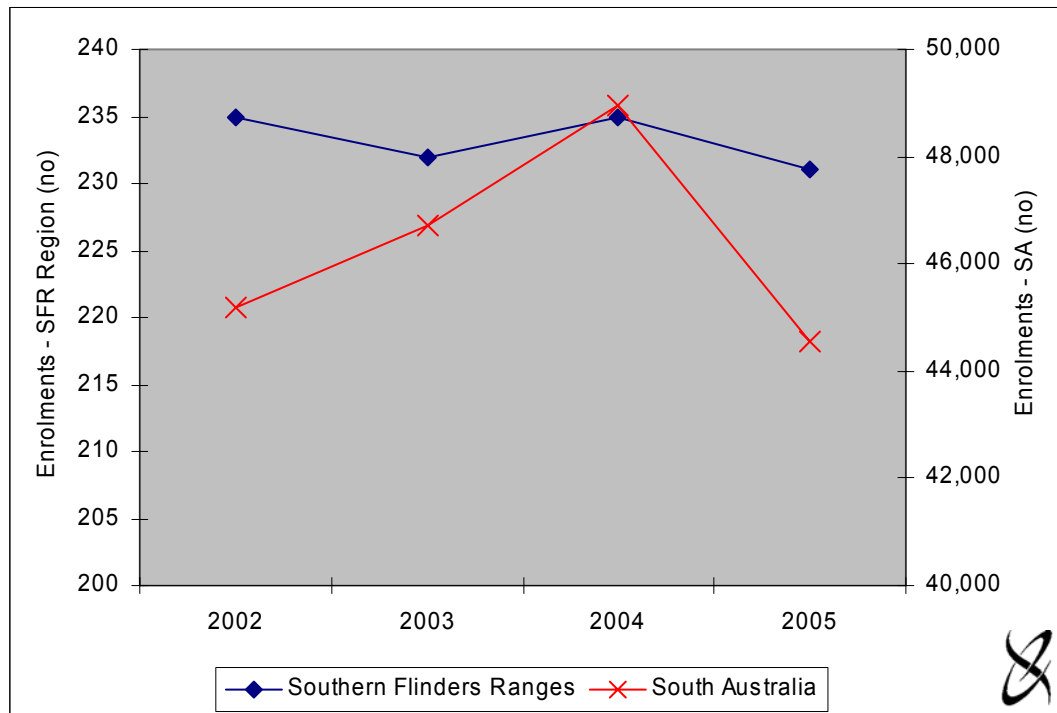
The total number of university enrolments by students from the SFR region and SA are detailed in Figure 4.1 below, for the years 2002 to 2005.

Enrolment data are for the three South Australian universities:

- Flinders University;
- The University of Adelaide; and
- University of South Australia.

Enrolments by SFR region or SA residents at interstate or overseas universities are not included in the figures below.

Figure 4.1 University enrolments by students from the SFR region and SA, 2002 to 2005



Source: Flinders University (unpublished data), University of South Australia (unpublished data) and The University of Adelaide (unpublished data).

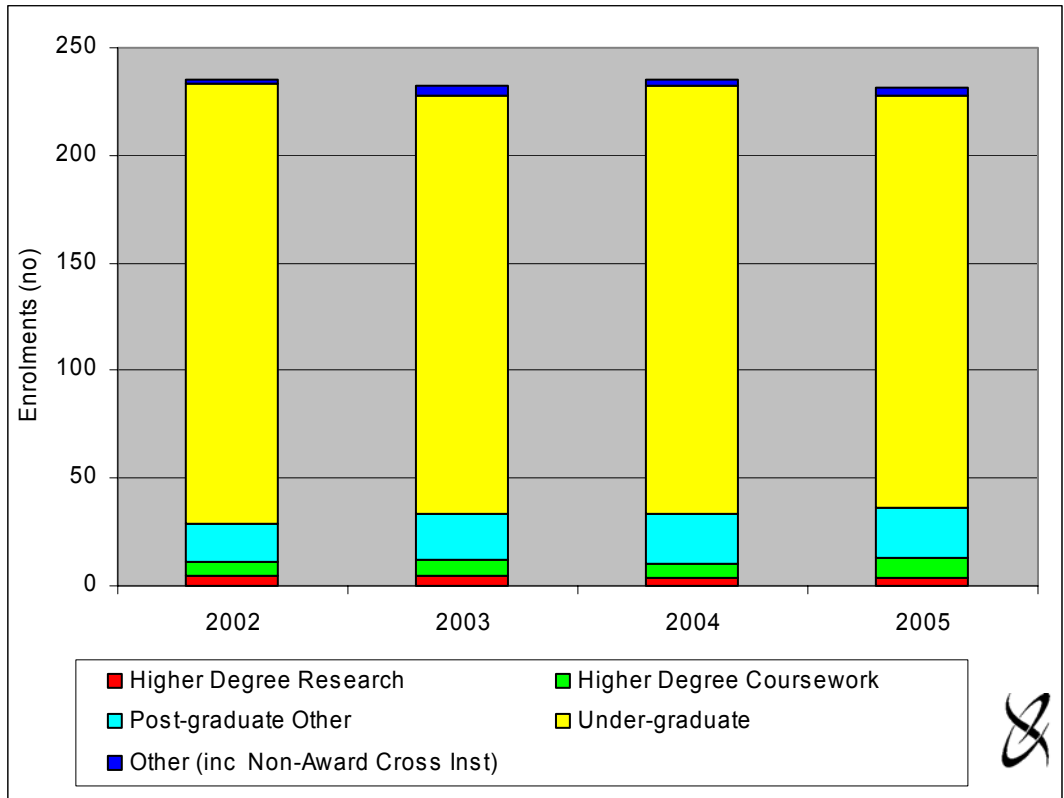
Total university enrolments by students from the SFR region remained relatively stable over the four years. Comparison of the two end years, however, does highlight a slight decrease (2 per cent) in total enrolments. The number of enrolments by students from SA as a whole increased from approximately 45,180 in 2002 to 48,950 in 2004, before decreasing to 44,550 in 2005. The number of students from the SFR as a proportion of students from SA as a whole remained relatively stable over the 3 year period, at about 0.6 per cent.

Note that the data are based on the holiday address postcodes of each student. This means that a student originally from the SFR region who stays in Adelaide over the holiday period would not be included in the SFR count. Consequently, the data are likely to understate the true number of enrolments from the SFR but, over time, the data should provide a reasonable trend.

The number of university student enrolments for the SFR region and SA, are detailed in Figures 4.2 and 4.3 below, for the years 2002 to 2005. Enrolments are broken down into the following categories to highlight the level of study undertaken:

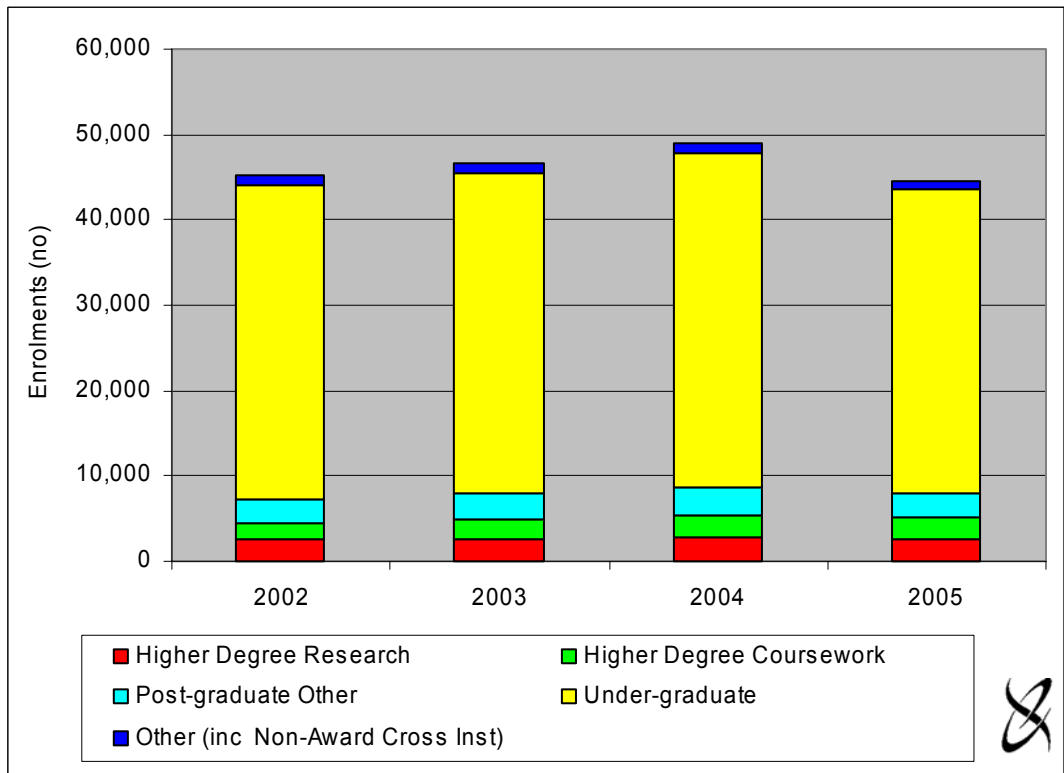
- higher degree research;
- higher degree coursework;
- other postgraduate;
- undergraduate; and
- other (including non-award and cross-institutional study).

Figure 4.2 University enrolments by students from the SFR region, 2002 to 2005



Source: Flinders University (unpublished data), University of South Australia (unpublished data) and The University of Adelaide (unpublished data).

Figure 4.3 University enrolments by students from South Australia, 2002 to 2005



Source: Flinders University (unpublished data), University of South Australia (unpublished data) and The University of Adelaide (unpublished data).

The breakdown of enrolments by program level over the three year period highlights some differences between the SFR region and SA as a whole. The differences in enrolment level are outlined below:

- higher degree research – 2 per cent of total enrolments in the SFR region, 6 per cent in SA;
- higher degree coursework – 3 per cent of total enrolments in the SFR region, 5 per cent in SA;
- other postgraduate – 9 per cent of total enrolments in the SFR region, 7 per cent in SA;
- undergraduate – 85 per cent of total enrolments in the SFR region, 80 per cent in SA; and
- other – 1 per cent of total enrolments in the SFR region, 2 per cent in SA.

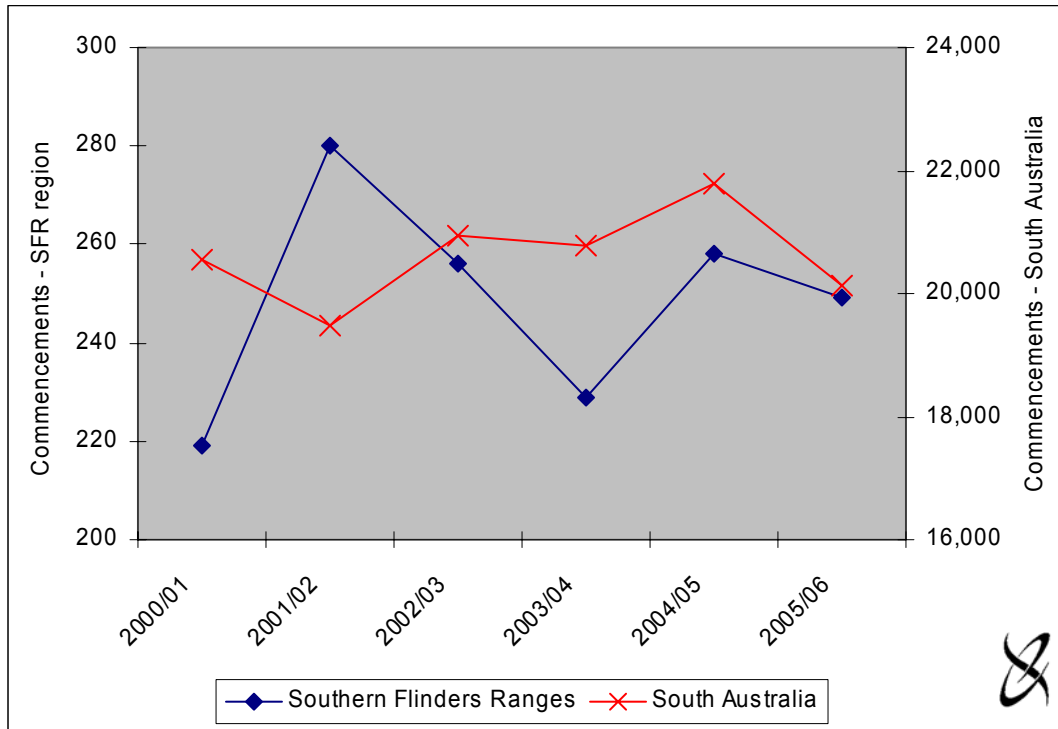
4.4 Contracts of Training

The number of contracts of training commencements and completion in the SFR region and SA are detailed in Figures 4.1 and 4.2, for the years 2000/01 to 2005/06. These data are derived from a live database, the numbers reported in Figures 4.1 and 4.2 were extracted from the database in September 2006.

The number of contract of training commencements in the SFR region fluctuated slightly over the 5 year period to 2005/06. As a proportion of total SA commencements, the SFR contracts of training averaged approximately 1.2 per cent over the 5 year period.

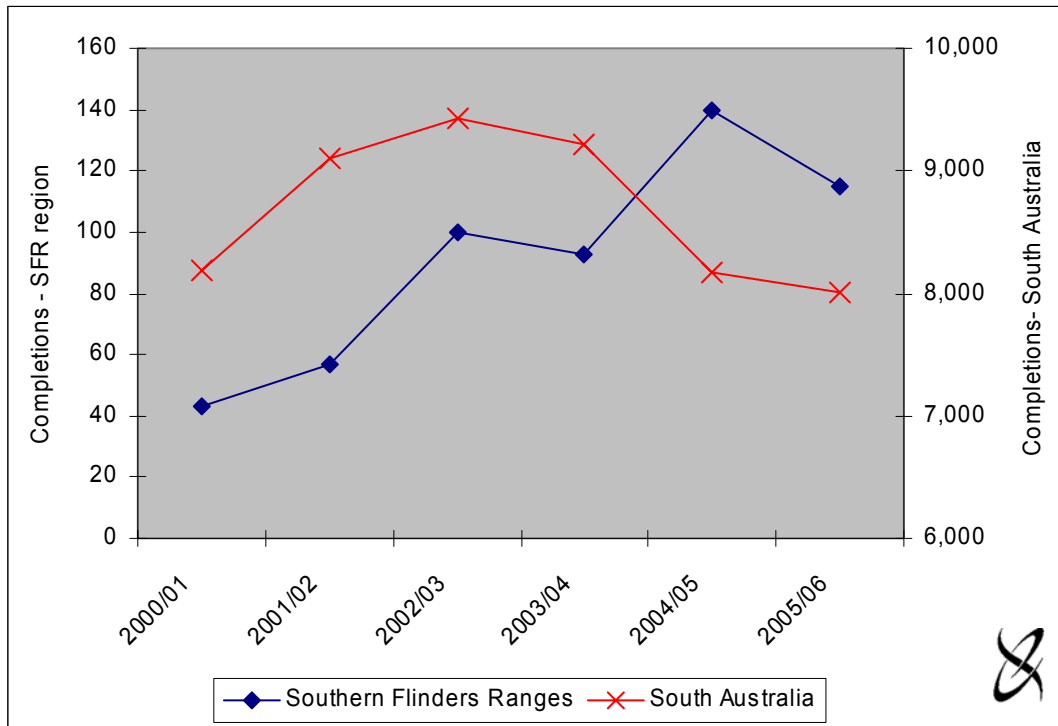
The total number of contract of training completions in the SFR region fluctuated significantly over the 5 year period, but generally followed an increasing trend. Completions in the SFR region as a proportion of total SA completions also fluctuated increasing from 0.5 per cent in 2000/01 to 1.7 per cent in 2004/05.

Figure 4.4 Contract of training commencements in the SFR region and SA, 2000/01 to 2005/06



Source: DFEEST (unpublished data)

Figure 4.5 Contract of training completions in the SFR region and SA, 2000/01 to 2005/06



Source: DFEEST (unpublished data).

5. Income

This section provides descriptive and comparative statistics of average annual income and income source relevant to the SFR region and SA.

5.1 Annual Taxable Income

The proportion of taxable individuals and the mean taxable income are presented in Table 5.1 for the SFR region and SA.

Table 5.1 Taxable individuals and taxable income in the SFR region and SA, 1997/98 to 2003/04

	1997/98	1998/99	1999/00	2000/01	2001/02	2002/03	2003/04
Southern Flinders Ranges							
Proportion of taxable individuals (%) ^a	79%	76%	75%	74%	78%	78%	76%
Mean taxable income - nominal (\$'000) ^b	28	29	30	32	35	37	36
Mean taxable income - real (\$'000) ^c	28	29	29	29	31	32	30
South Australia							
Proportion of taxable individuals (%) ^a	84%	82%	83%	81%	81%	81%	81%
Mean taxable income - nominal (\$'000) ^b	30	32	33	35	36	38	40
Mean taxable income - real (\$'000) ^c	30	32	32	32	32	32	33

^a Refers to personal taxpayers who submitted a return with net tax payable of more than \$0.

^b Mean (average) taxable income refers only to taxable individuals and is calculated by dividing net taxable income of the region as a whole by the number of taxable individuals.

^c The real mean individual taxable income is the nominal income adjusted by the purchasing power of money. The consumer price index (CPI) has been used to make this adjustment (ABS 2006c). It enables meaningful comparisons of incomes to be made between years.

Source: ATO (2006) and ABS (2006c).

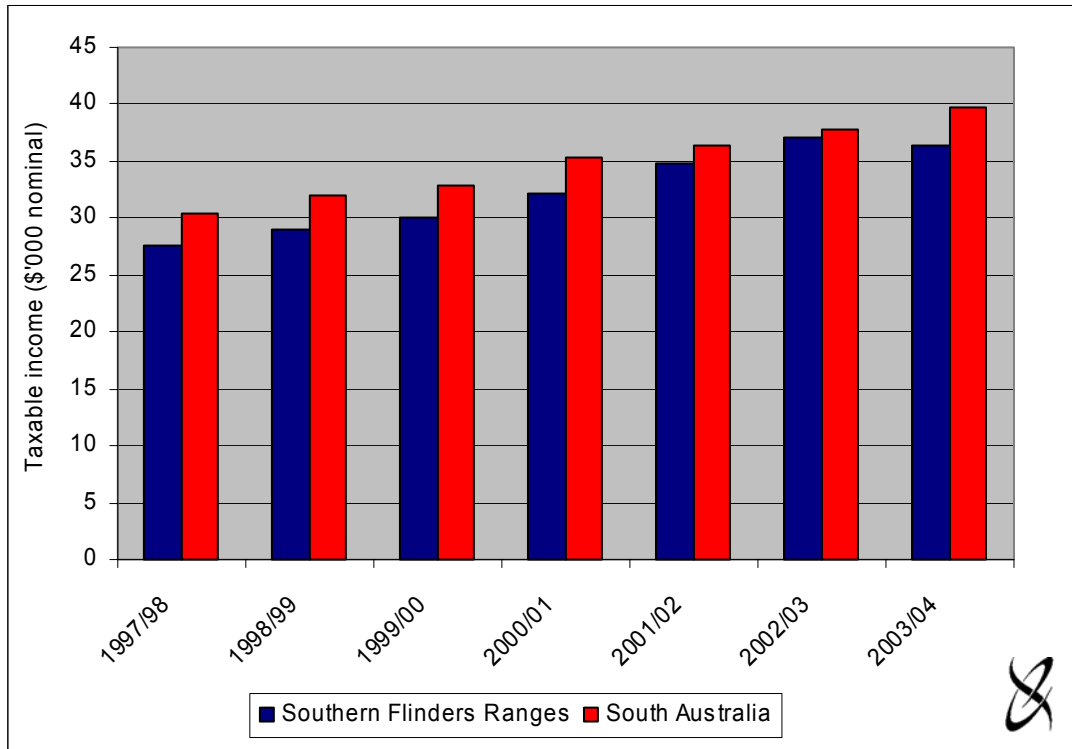
The proportion of taxable individuals (compared to non-taxable individuals) in the SFR region fluctuated slightly over the six year period, ranging from a low of 74 per cent in 2000/01 to a high of 79 per cent in 1997/98. In the 2003/04, there were 8,640 taxable and 2,695 non-taxable⁷ individuals in the SFR region, the proportion of taxable individuals was 76 per cent. Despite a slight decrease over the six year period (from 84 per cent to 81 per cent), the proportion of taxable individuals in SA as a whole was greater than the SFR region in all years.

The mean individual taxable incomes in the SFR region and SA for the period 1999/00 to 2003/04 are illustrated below in Figures 5.1 (nominal terms) and 5.2 (real terms)

Taxable income is the amount remaining after deducting from assessable income all allowable deductions under the *Income Tax Assessment Act 1936*. Taxable income is the amount to which tax rates are applied. Average taxable income in an area is the taxable income per person (calculated by dividing the total taxable income for the region by the total number of taxable individuals).

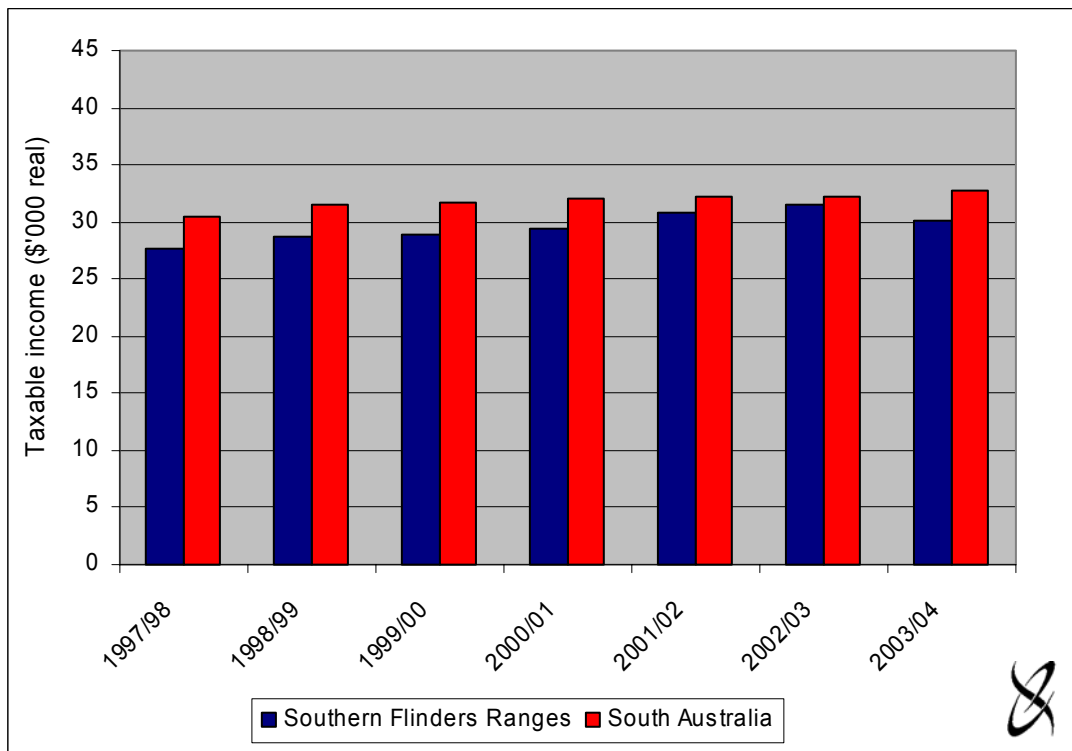
⁷ An individual is considered non-taxable when the net tax payable by the individual is equal to zero.

Figure 5.1 Nominal mean individual taxable income in the SFR region and SA, 1997/98 to 2003/04



Source: ATO (2006).

Figure 5.2 Real mean individual taxable income in the SFR region and SA, 1997/98 to 2003/04 ^a



^a In 1997/98 dollars.

Source: ATO (2006) and ABS (2006c).

The mean individual taxable income in the SFR region was consistently lower than the state average, over the period 1997/98 to 2003/04, in both nominal and real terms. In the SFR region the mean individual taxable income increased in nominal terms, from approximately \$28,000 in 1997/98 to \$37,000 in 2002/03. The mean individual taxable income declined slightly between 2002/03 and 2003/04 from \$37,000 to \$36,000, a decrease of 2 per cent. For SA the mean individual taxable income increased steadily over the six year period from \$30,000 in 1997/98 to \$40,000 in 2003/04 (Table 5.1 and Figure 5.1).

5.2 Income Source

Total income, salaries and wages, Commonwealth benefits and payments and gross tax are detailed in Table 5.2 for the SFR region and SA for the period 1997/98 to 2003/04. The proportion of total income from Commonwealth benefits and payments, salaries and wages, other income sources and paid in gross tax is illustrated in Figures 5.3 to 5.6 respectively.

Salary and wages comprise salary, wages and other labour costs actually paid or payable to persons employed. Commonwealth benefits and payments include payments such as social security, unemployment, sickness or special benefits, formal training allowances, AuStudy, AbStudy, New Start Allowance, Youth Allowance, Age Pension and Disability Support Pension. Other income includes income earned from Commonwealth benefits and payments and sources other than salaries and wages. Other income sources (i.e. excluding wages and salaries and Commonwealth benefits and payments) could include investment related income such as interest, rent or dividends.

In the SFR region, the proportion of total income from Commonwealth benefits and payments generally followed a declining trend over the period 1997/98 to 2003/04. Despite this, it was consistently higher than for SA over the seven years. In 1997/98 Commonwealth benefits and payments accounted for 2.1 per cent of total income in the SFR region and 1.2 per cent in SA as a whole. By 2003/04, the proportion of benefits and payments was 1.3 per cent in the SFR region and 0.8 per cent in SA (Table 5.2 and Figure 5.3).

The proportion of total income from salaries and wages, in the SFR region was 70 per cent in 2003/04 compared to 75 per cent in 1997/98. The proportion of salaries and wages remained relatively stable in SA averaging around 77 per cent over the seven years (Table 5.2 and Figure 5.4).

The proportion of total taxable income attributable to other income sources generally followed an increasing trend, between 1997/98 to 2003/04 in the SFR region, increasing from 23 per cent to 29 per cent. For SA the proportion of total income attributable to other income sources remained relatively stable over the seven years at about 22 per cent.

In the SFR region, tax as a proportion of total income varied slightly over the seven years averaging around 22 per cent. For SA as a whole, the proportion of tax also remained relatively stable averaging around 23 per cent over the seven years (Table 5.2 and Figure 5.5).

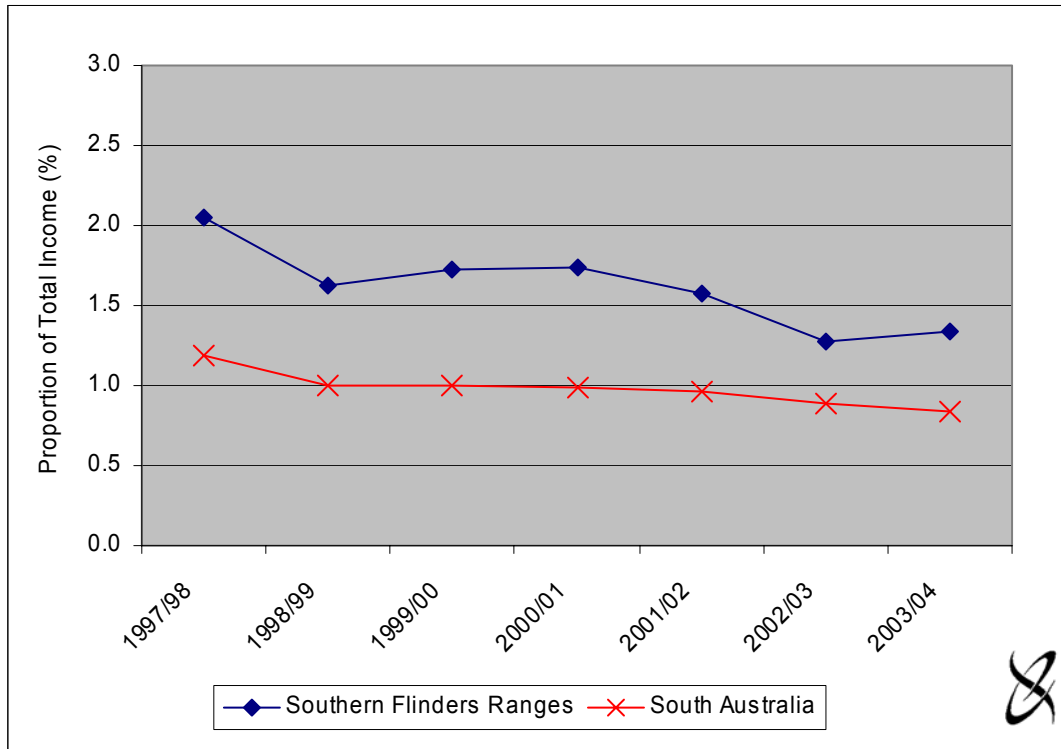
Table 5.2 Total income and some of its components for the SFR and SA, 1997/98 to 2003/04

Year	1997/98	1998/99	1999/00	2000/01	2001/02	2002/03	2003/04
Southern Flinders Ranges							
Salaries and Wages (\$'000)	193,839	195,947	193,466	207,559	216,288	225,330	235,611
Commonwealth Benefit and Payments (\$'000)	5,210	4,080	4,323	4,738	4,910	4,298	4,218
Other Income (\$'000) ^a	55,381	51,128	53,367	59,628	89,320	106,301	74,994
Total Income (\$'000)	254,430	251,155	251,157	271,925	310,517	335,930	314,823
Gross Tax (\$'000)	56,742	57,046	57,483	56,229	68,205	73,366	68,535
South Australia							
Salaries and Wages (\$'000)	15,190,573	15,904,698	16,618,824	17,455,865	18,219,691	19,357,598	20,654,259
Commonwealth Benefit and Payments (\$'000)	237,094	202,755	215,840	223,444	228,790	225,171	224,479
Other Income (\$'000) ^a	4,475,898	4,049,323	4,642,005	4,850,295	5,179,735	5,674,652	6,045,757
Total Income (\$'000)	19,903,565	20,156,776	21,476,669	22,529,603	23,628,215	25,257,421	26,924,496
Gross Tax (\$'000)	4,698,261	4,858,282	5,301,943	5,007,441	5,334,679	5,837,576	6,220,474

^a 'Other income' includes income of taxable individuals other than income received from 'Salaries and Wages' and 'Commonwealth Benefits and Payments'. This could include investment income such as rent and interest.

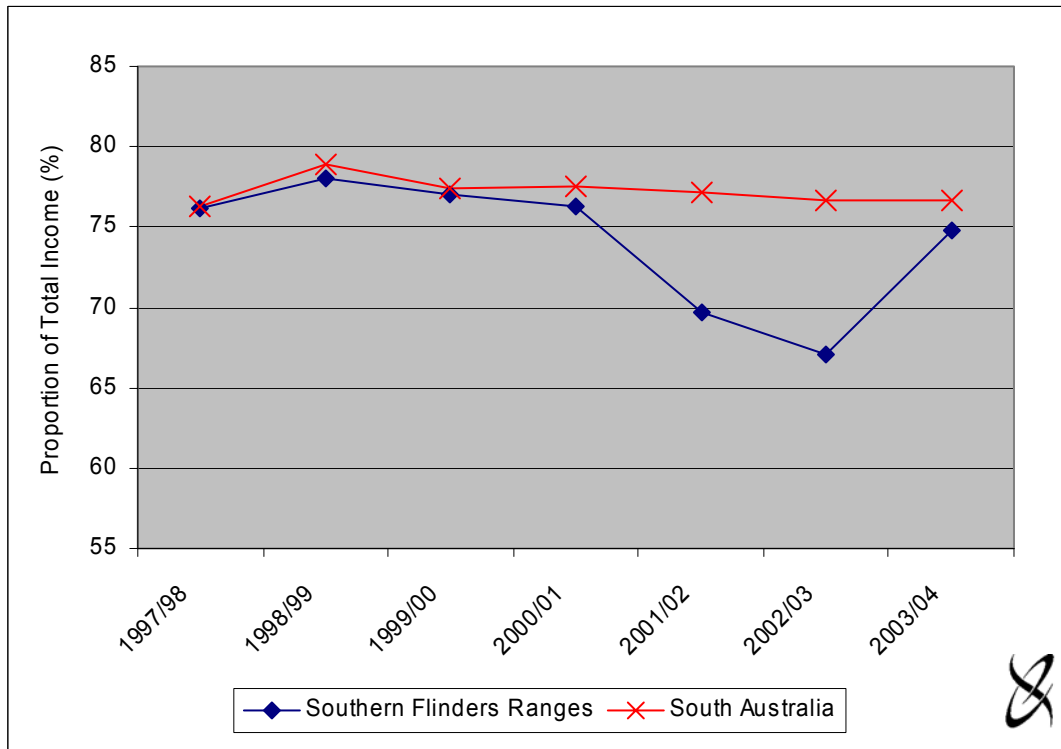
Source: ATO (2006).

Figure 5.3 Commonwealth benefits and payments as a proportion of total income in the SFR region and SA, 1997/98 to 2003/04



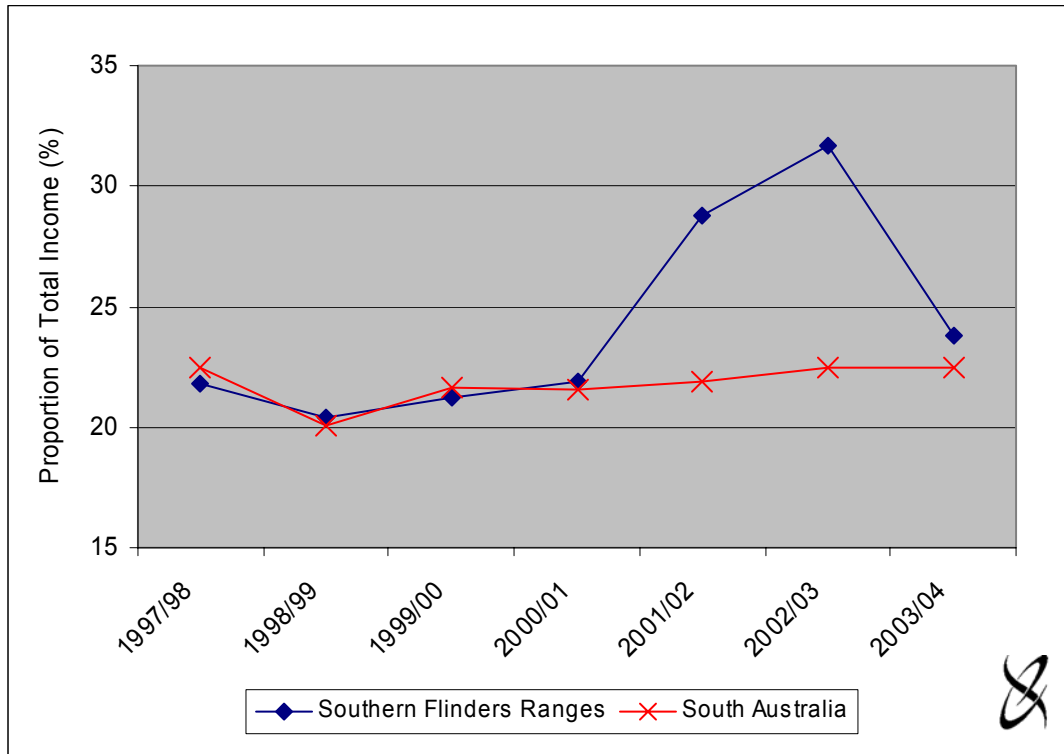
Source: ATO (2006).

Figure 5.4 Salaries and wages as a proportion of total income in the SFR region and SA, 1997/98 to 2003/04



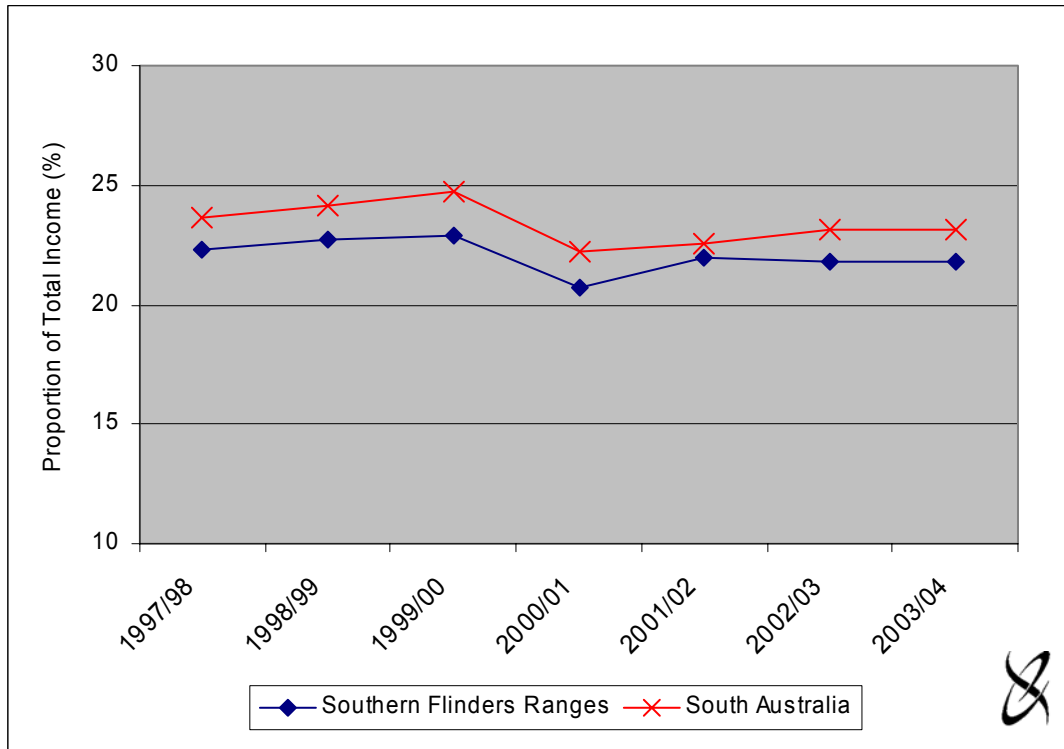
Source: ATO (2006).

Figure 5.5 Other income as a proportion of total income in the SFR region and SA, 1997/98 to 2003/04



Source: ATO (2006).

Figure 5.6 Gross tax as a proportion of total income in the SFR region and SA, 1997/98 to 2003/04



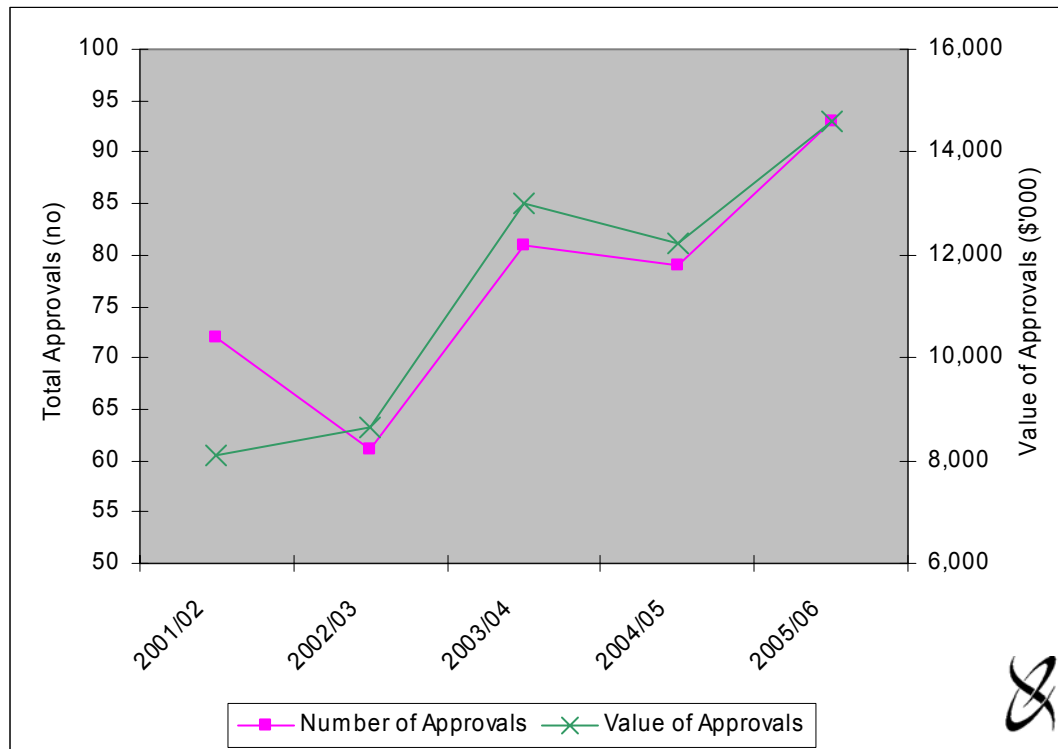
Source: ATO (2006).

6. Building Approvals

This section provides descriptive the number and value of approvals for new residential dwellings in the SFR region and SA.

The number and total value of approvals in the SFR region and SA are illustrated in Figures 6.1 and 6.2 respectively, for the period 2001/02 to 2005/06.

Figure 6.1 Number and value of new residential dwelling approvals in the SFR region, 2001/02 to 2005/06



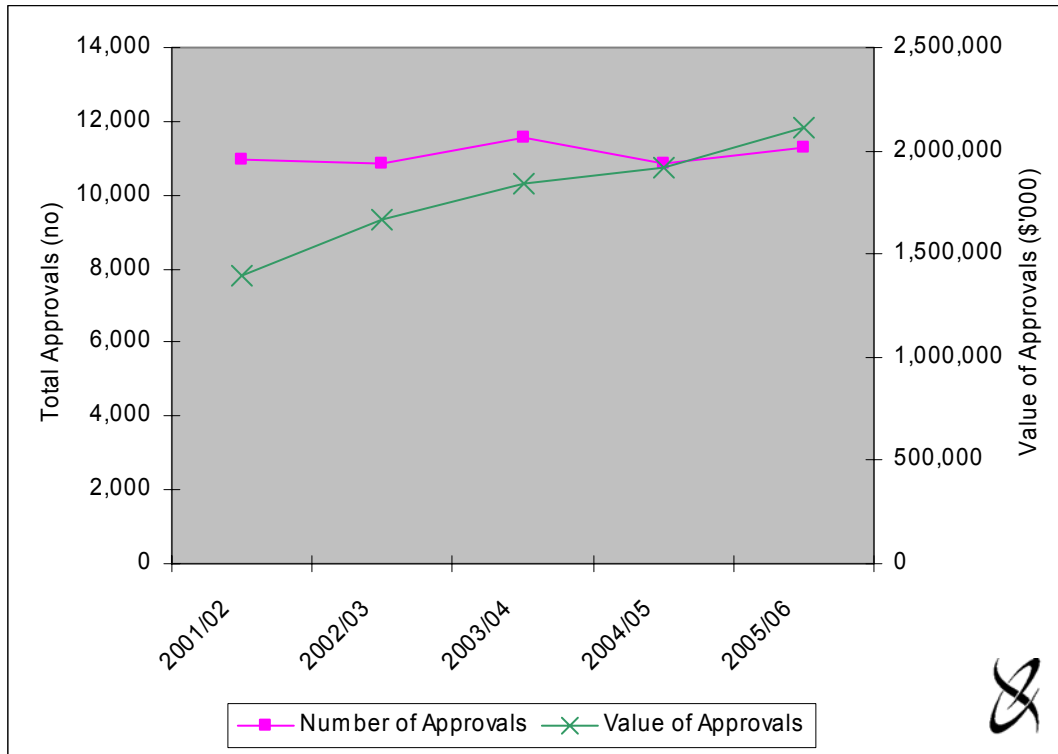
Source: ABS (2006d).

The total number of building approvals in the SFR region increased by 29 per cent over the five years from 72 in 2001/02 to 93 in 2005/06. The total value of approvals also increased, from \$8.1 million in 2001/02 to \$14.6 million in 2005/06, an increase of 80 per cent (Figure 6.1).

Comparison of the two end years (2001/02 and 2005/06) highlights the significant increase in the value of building approvals in SA as a whole. The total number of approvals was 3 per cent greater in 2005/06 than in 2001/02, while the total value was 51 per cent higher (Figure 6.2).

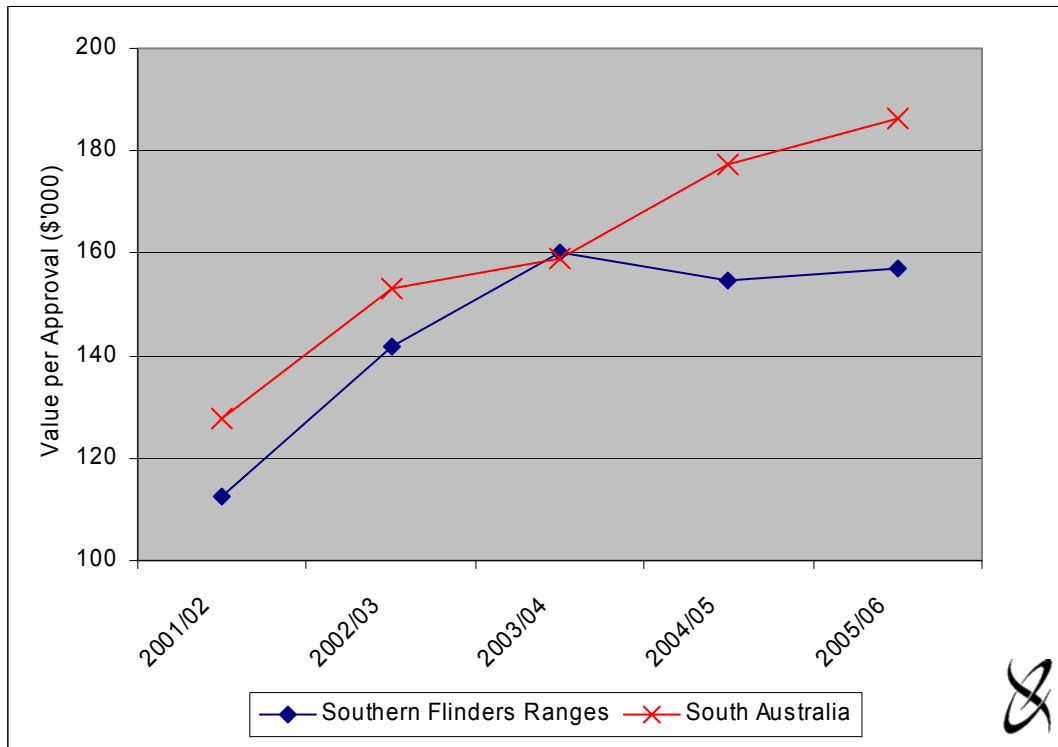
The average value per approval in the SFR region and SA for the period 2001/02 to 2005/06 is illustrated in Figure 6.3. The average value per approval in the SFR increased by approximately 39 per cent from \$113,000 in 2001/02 to \$157,000 in 2005/06. For SA the value per approval increased from \$128,000 in 2001/02 to \$186,000 in 2005/06, an increase of 46 per cent.

Figure 6.2 Number and value of new residential dwelling approvals in SA, 2001/02 to 2005/06



Source: ABS (2006d).

Figure 6.3 Average value per approval in the SFR region and SA, 2001/02 to 2005/06



Source: ABS (2006d).

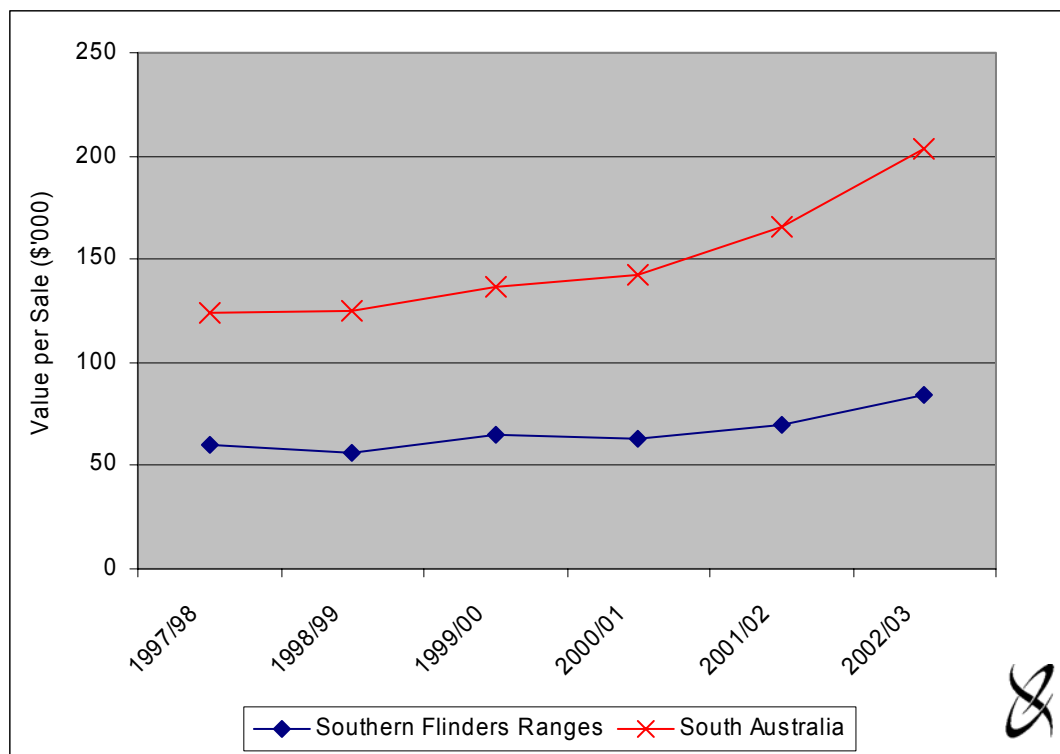
7. Property Sales

This section of the report provides descriptive and comparative statistics of the average value of residential, commercial and primary production property sales in the SFR region and SA.

7.1 Residential Sales

The average value of residential property sales in the SFR region and SA is illustrated in Figure 7.1 below for the period 1997/98 to 2002/03.

Figure 7.1 Average value of residential property sales in the SFR region and SA, 1997/98 to 2002/03



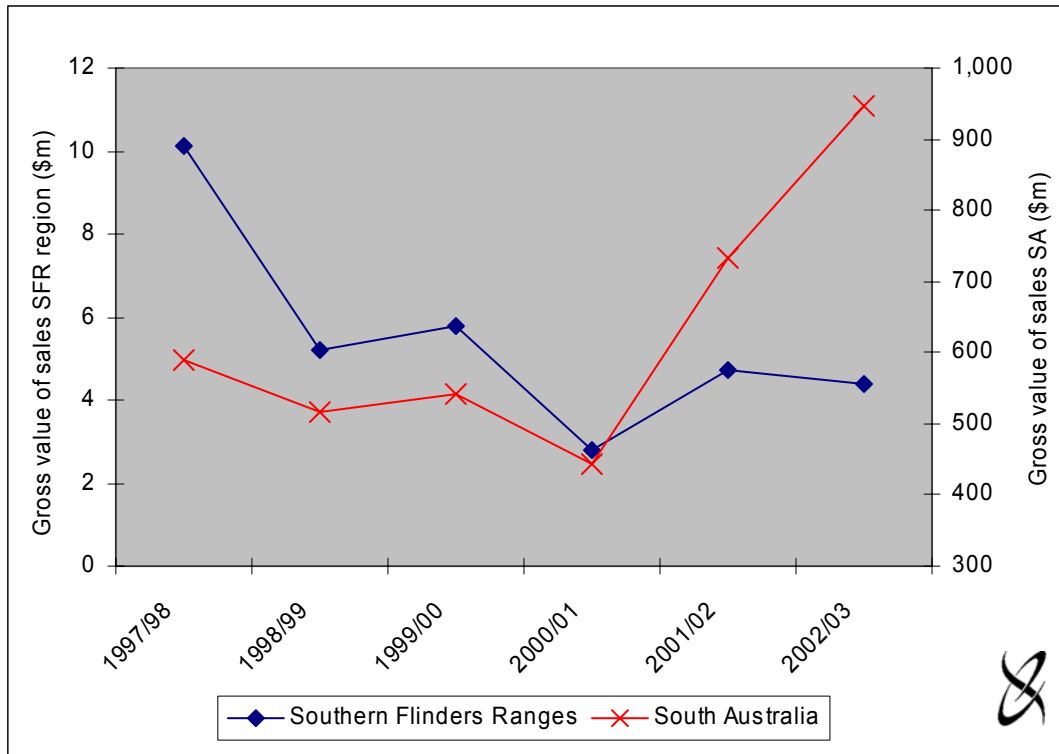
Source: ABS (2004).

The average value of residential property sales in the SFR region increased by almost 40 per cent, over the five year period, from approximately \$60,000 in 1997/98 to \$84,000 in 2002/03. Despite this, the average value per sale in SA as a whole was consistently higher than in the SFR region. The average value of residential property sales in SA increased by approximately 65 per cent, over the five year period to 2002/03, from almost \$124,000 to \$204,000.

7.2 Commercial Sales

The gross value of commercial property sales in the SFR region and SA is illustrated in Figure 7.2 below for the period 1997/98 to 2002/03.

Figure 7.2 Gross value of commercial property sales in the SFR region and SA, 1997/98 to 2002/03



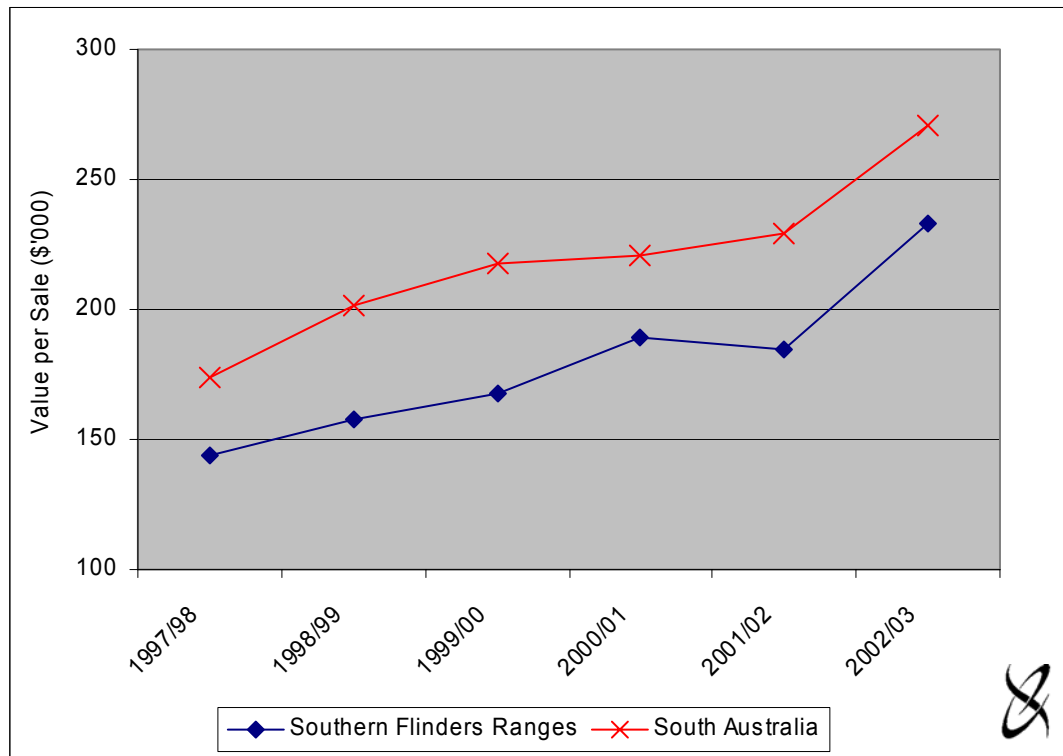
Source: ABS (2004).

The gross value of commercial property sales in the SFR region decreased by 72 per cent between 1997/98 and 2000/01, from approximately \$10.1 million to \$2.8 million. The total value of sales increased to \$4.7 million in 2001/02, an increase of 68 per cent compared to the previous year. The total value of sales declined slightly in 2002/03 to approximately \$4.4 million. The total value of sales SA followed a similar declining trend between 1997/98 and 2000/01, before increasing significantly in the following years.

7.3 Primary Production Sales

The average value of primary production property sales in the SFR region and SA is illustrated in Figure 7.3 below for the period 1997/98 to 2002/03.

Figure 7.3 Average value of primary production property sales in the SFR region and SA, 1997/98 to 2002/03



Source: ABS (2004).

The average value of primary production property sales in the SFR region increased by 62 per cent over the five year period 1997/98 to 2002/03, from approximately \$144,000 to \$233,000. Despite this, the average value per sale was consistently higher in SA as a whole than in the SFR region. The average value of primary production property sales in SA increased from \$174,000 in 1997/98 to \$271,000 in 2002/03, an increase of 55 per cent.

8. Motor Vehicles

8.1 New Motor Vehicle Sales

The number of new motor vehicle sales in the SFR region and SA for the years 2001/02 and 2002/03 is detailed in Table 8.1 below.

Table 8.1 Number of new motor vehicle sales in the SFR region and SA, 2001/02 and 2002/03

Year	Sales (no.)		Regional sales as a proportion of SA total
	Southern Flinders Ranges	South Australia	
2001/02	623	50,756	1.23%
2002/03	649	56,610	1.15%

Source: ABS (2004).

The number of new motor vehicle sales in the SFR region increased by 4.2 per cent between 2001/02 and 2002/03. For SA as a whole, the number of new motor vehicle sales increased by almost 12 per cent. Sales in the SFR region as a proportion of the state total decreased slightly from 1.23 per cent in 2001/02 to 1.15 per cent in 2002/03.

8.2 Motor Vehicle Registrations

The total number of registered motor vehicles in the SFR region and SA for the years 2002/03 to 2004/05 is detailed in Table 8.2 below.

Table 8.2 Motor vehicle registrations in the SFR region and SA, 2002/03 to 2004/05

Year	SFR Region		South Australia		Regional registrations as a % of SA total
	Number of registrations	Change from previous year	Number of registrations	Change from previous year	
2002/03	18,402	-	1,077,154	-	1.71%
2003/04	18,575	0.94%	1,095,923	1.74%	1.69%
2004/05	18,752	0.95%	1,111,712	1.44%	1.69%

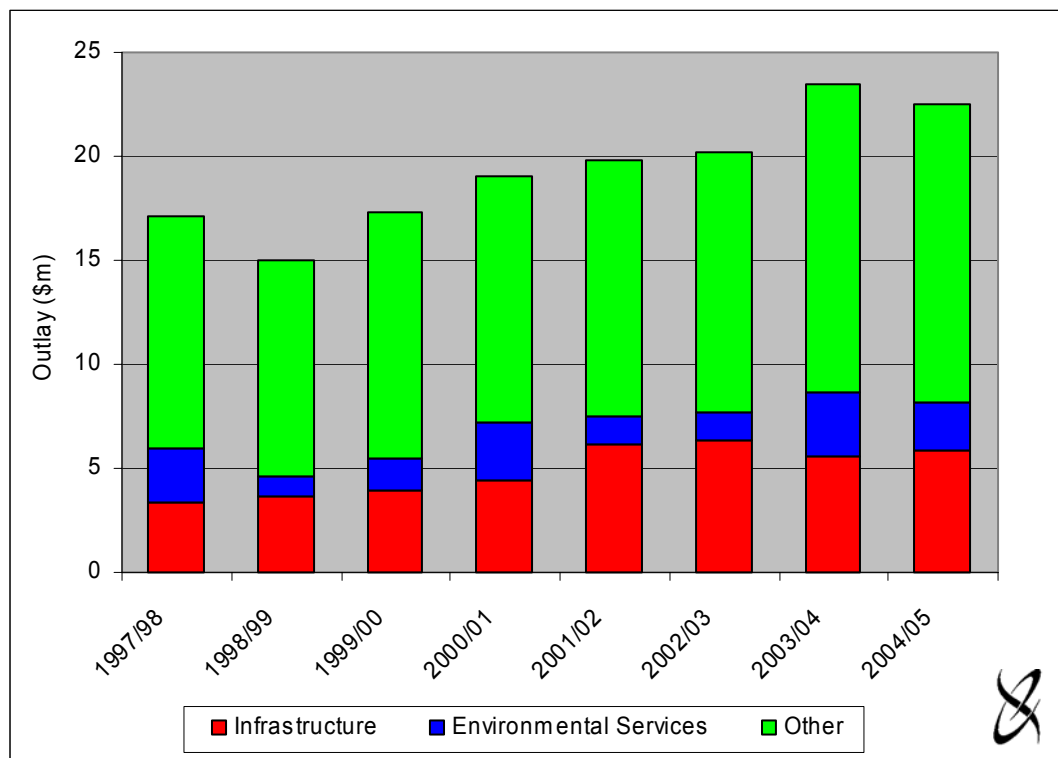
Source: ABS (2005c)

9. Local Government Finance

Outlay by local government in the SFR region and SA as a whole is detailed in Figures 9.1 and 9.2 respectively for the period 1997/98 to 2004/05. Total local government outlay has been divided into three categories:

- infrastructure;
- environmental services; and
- other outlay.

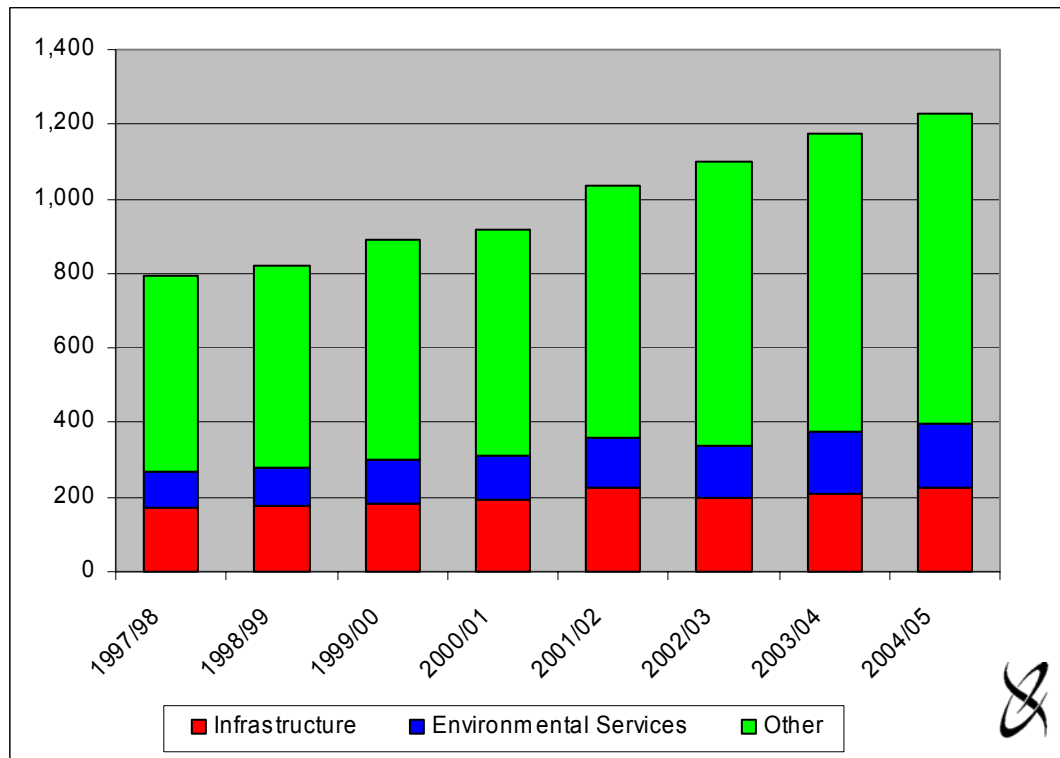
Figure 9.1 Outlay by local government in the SFR region, 1997/98 to 2004/05



Source: South Australian Local Government Grants Commission (by request).

Despite a slight decrease in 1998/99, total local government outlay in the SFR region followed an increasing trend over the eight years 1997/98 to 2004/05. Total outlay increased by almost 32 per cent from \$16.1 million in 1997/98 to \$22.5 million in 2004/05. Outlay on infrastructure generally increased over the period, ranging between \$3.4 million in 1997/98 and \$6.3 million in 2002/03. Outlay on environmental services fluctuated over the eight years, ranging between \$0.9 million in 1998/99 and \$3.1 million in 2003/04. Despite a slight decrease in 1998/99, total other outlay followed an increasing trend over the eight years to 2004/05. Total other outlay increased by almost 13 per cent from \$11.1 million in 1997/98 to \$14.3 million in 2004/05 (Figure 9.1).

Figure 9.2 Outlay by local government in the SA, 1997/98 to 2004/05



Source: South Australian Local Government Grants Commission (by request).

Over the eight years, on average, expenditure on infrastructure accounted for approximately 20 per cent of total local government outlay in the SFR region and 25 per cent in SA. Outlay on environmental services accounted for 10 per cent of total outlay in the SFR region and 13 per cent in SA.

10. Business Registrations

Single location business registrations in the SFR region and for SA are detailed in Table 10.1 below.

Table 10.1 Single location business registrations in the SFR region ^a and SA, 2001

Industry	2001			
	Southern Flinders Ranges		South Australia	
	(no.)	% of total	(no.)	% of total
Agriculture, Forestry & Fishing	816	44.2%	23,195	15.3%
Mining	n.a.	-	488	0.3%
Manufacturing	56	3.0%	8,661	5.7%
Electricity, Gas & Water Supply	n.a.	-	121	0.1%
Construction	170	9.2%	18,946	12.5%
Wholesale Trade	38	2.1%	5,316	3.5%
Retail Trade	234	12.7%	16,508	10.9%
Accommodation, Cafes & Restaurants	38	2.1%	3,627	2.4%
Transport & Storage	90	4.9%	8,316	5.5%
Communication Services	7	0.4%	2,143	1.4%
Finance & Insurance	41	2.2%	14,552	9.6%
Property & Business Services	182	9.8%	28,668	19.0%
Government Admin & Defence	n.a.	-	393	0.3%
Education	19	1.0%	2,247	1.5%
Health & Community Services	44	2.4%	6,828	4.5%
Cultural & Recreational Services	30	1.6%	3,977	2.6%
Personal & Other Services	83	4.5%	6,973	4.6%
Industry Not Stated	n.a.	-	235	0.2%
Total	1,848	100.0%	151,194	100.0%

^a Data only available for the Port Pirie City and Districts, Mount Remarkable and part of the Northern Areas LGA.

Source: ABS (2002).

According to the Australian Business Register, there were 1,848 single location business registrations within the SFR region in 2001. The majority of these businesses were in the agriculture, forestry and fishing (44.2 per cent), retail trade (12.7 per cent), property and business services (9.8 per cent) and construction (9.2 per cent) industries (Table 10.1). Together, these four industries made up more than two-thirds of all single location business registrations in the region.

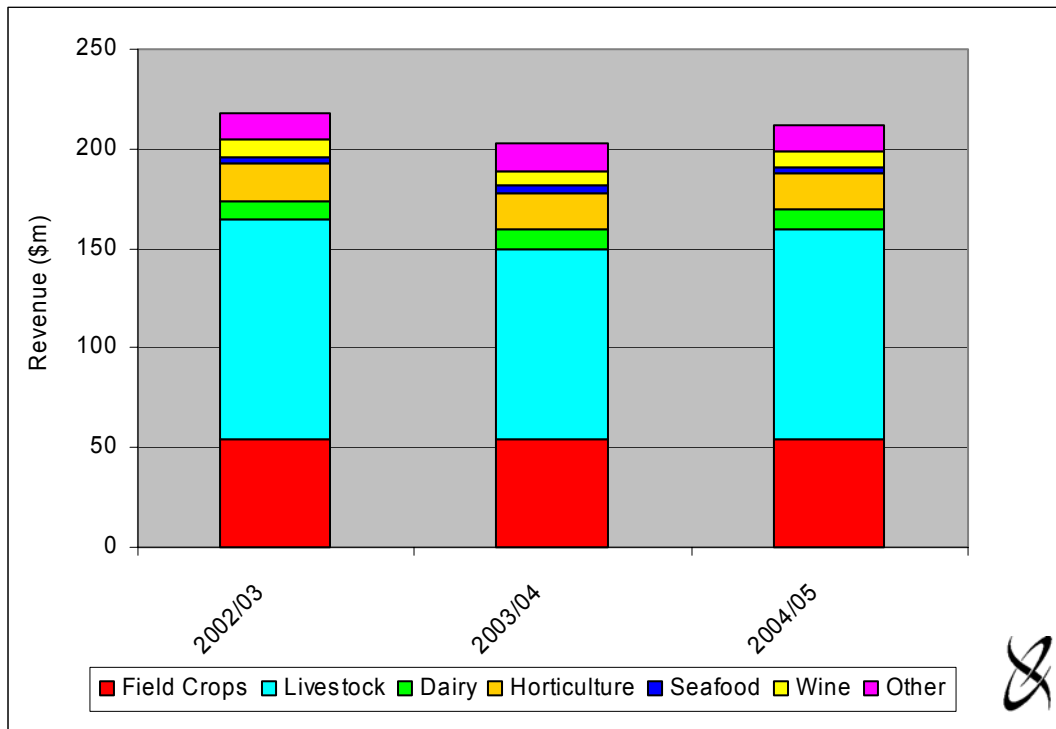
The breakdown of business registrations by industry highlights some differences between the SFR region and SA (Table 10.1). The most significant differences occurred in the following sectors:

- agriculture, forestry and fishing – 44.2 per cent in the SFR and 15.3 per cent in SA;
- property and business services – 9.8 per cent in the SFR and 19.0 per cent in SA; and
- finance and insurance – 2.2 per cent in the SFR and 9.6 per cent in SA.

11. Value of Food Production

The breakdown of the total value of food production is illustrated in Figures 11.1 and 11.2 for the SFR region and SA respectively.

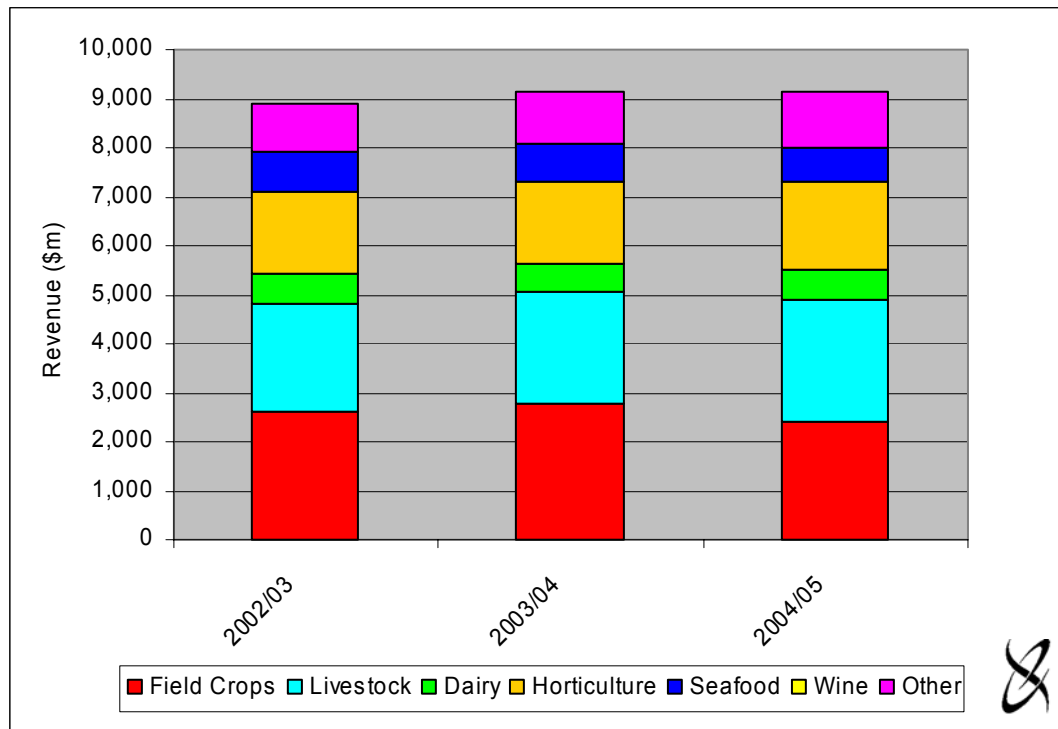
Figure 11.1 Gross value of food production in the SFR region, 2002/03 to 2004/05



Source: PIRSA (2005).

Agricultural activities in the SFR region are concentrated in the livestock and field crops sectors which, in 2004/05, accounted for over 75 per cent of the region's gross food and wine revenue. Horticulture, dairy, wine and seafood comprised 8.7 per cent, 4.8 per cent, 3.5 per cent and 1.5 per cent respectively of gross food and wine revenue for 2004/05 (Figure 11.1). The SFR region's gross food revenue of \$204.3 million in 2004/05 represents 2.2 per cent of the state's gross food revenue. The key livestock industries in the SFR region are wool, pigs, lamb, sheep, beef cattle and egg production. The major field crops in the region are wheat, barley, peas and canola. The horticulture industry is comprised mainly of potatoes, zucchinis, capsicum and peaches.

Figure 11.2 Gross value of food production in SA, 2002/03 to 2004/05



Source: PIRSA (2005).

12. Tourism

This section provides descriptive and comparative statistics of some tourism related indicators such as accommodation takings⁸ and room occupancy rate⁹ for hotels, motels and serviced apartments with 15 or more rooms in the SFR region and SA.

The total number of rooms occupied and total accommodation takings by hotels, motels and serviced apartments with 15 or more rooms in the SFR region are illustrated in Figure 12.1.

Figure 12.1 Rooms occupied and takings in the SFR region, 2003 to 2005



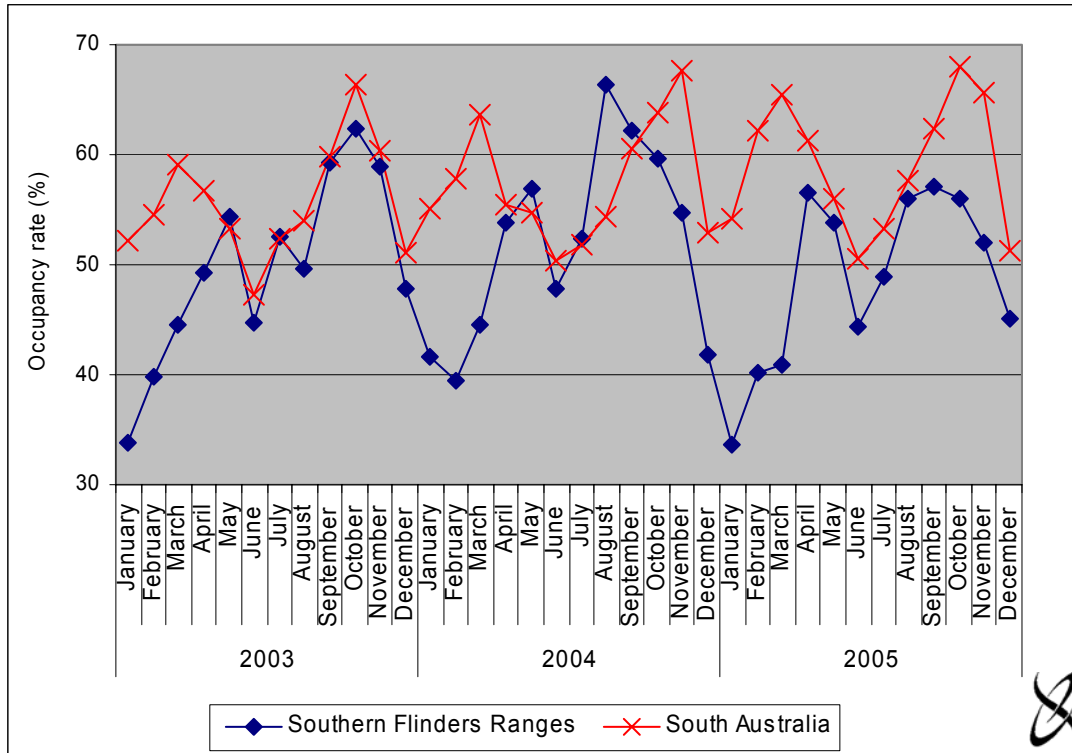
Source: ABS (2006d).

The room occupancy rate and the takings per occupied room night for hotels, motels or serviced apartments with 15 rooms or more in the SFR region and SA is illustrated in Figures 12.2 and 12.3.

⁸ Accommodation takings include gross revenue from the provision of accommodation, including GST. Takings from meals are excluded.

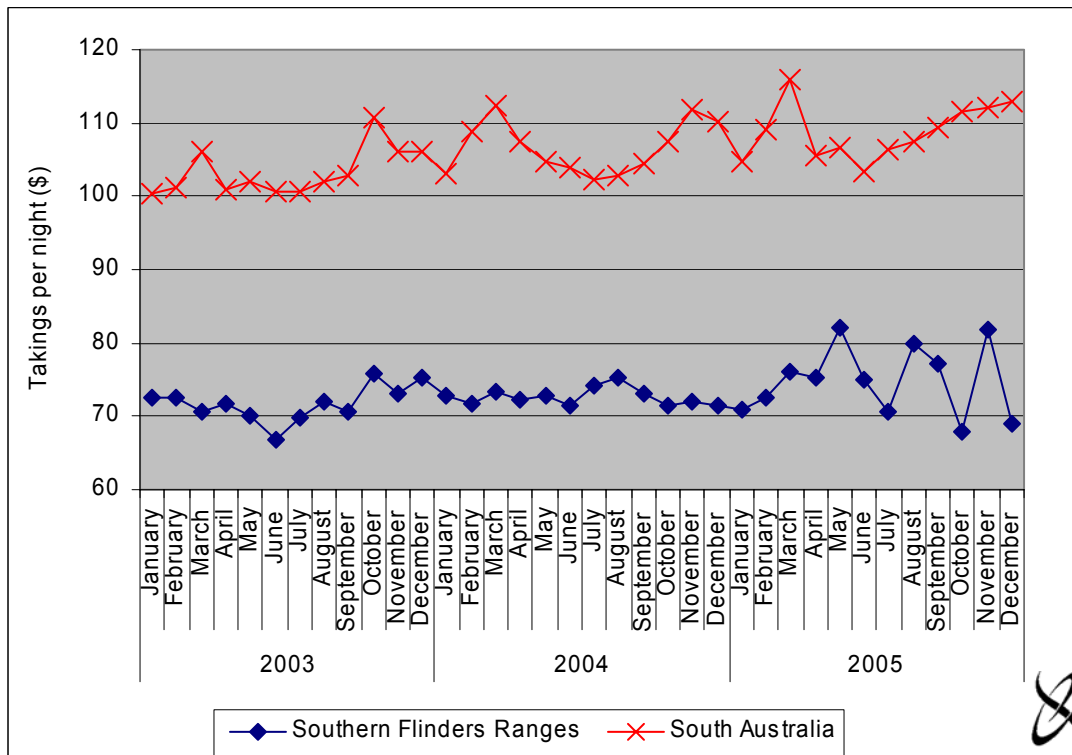
⁹ Room occupancy rate (%) = (Room nights occupied ÷ Room nights available) * 100.

Figure 12.2 Room occupancy rate in the SFR region and SA, 2003 to 2005



Source: ABS (2006d).

Figure 12.3 Takings per room in the SFR region and SA, 2003 to 2005



Source: ABS (2006d).

The estimate of the total accommodation takings for hotels, motels and serviced apartments with 15 or more rooms decreased by 19.4 per cent in December quarter 2005 compared with September quarter 2005 (Figure 12.1). It decreased by 10.6 per cent to \$0.45 million in December 2005 from \$0.5 million in December 2004. In South Australia, the trend estimate of the total accommodation takings for hotels, motels and serviced apartments with 15 or more rooms increased by 9.6 per cent in December quarter 2005 compared with September quarter 2005. Over the twelve months ending December 2005, total accommodation takings increased by 4.5 per cent in South Australia. It is worth noting that the SFR region's share of the state's accommodation takings fell from 0.83 per cent in December 2003 to 0.60 per cent in December 2005.

The estimate of the room occupancy rate for the SFR region for hotels, motels and serviced apartments with 15 or more rooms in the December quarter 2005 was 51.0 per cent, down from 56.4 per cent in the December quarter 2003 (Figure 12.2). Corresponding estimates of the room occupancy rates for the state have been consistently higher than for the SFR region over the 2003 to 2005 period, with the exception of the September quarter 2004.

13. Gross Regional Product

Contribution to gross regional/state product (GRP/GSP) is a measure of the net contribution of an activity to the regional or national economy. Contribution to GRP/GSP is measured as value of output less the cost of goods and services (including imports) used in producing the output. In other words, it can be measured as household income plus other value added (gross operating surplus and all taxes, less subsidies). It represents payments to the primary inputs of production (labour, capital and land). Using contribution to GRP as a measure of economic impact avoids the problem of double counting that may arise from using value of output for this purpose.

Gross Regional Product can be calculated for the SFR region from the information provided in a regional input-output table for 2002/03 (EconSearch 2005). Estimates for subsequent years have been based on changes in employment by industry at a regional level, changes in wage rates by industry and changes in business profitability, also at an industry level. GSP is published annually by the ABS as part of their National Account: State Account series.

Table 13.1 Gross regional production in the SFR region and SA, 2002/03 to 2004/05

	2002/03	2003/04	2004/05
Southern Flinders Ranges			
- GRP (\$m)	561	622	642
- Nominal growth over previous year (%)	-	10.9%	3.1%
- Real growth over previous year (%)	-	7.7%	0.8%
South Australia			
- GRP (\$m)	53,635	56,737	59,819
- Nominal growth over previous year (%)	-	5.8%	5.4%
- Real growth over previous year (%)	-	2.7%	3.0%

Source: ABS (2005b), EconSearch (2005) and EconSearch analysis.

The SFR region and SA GRP/GSP were \$561 million and \$53,635 million, respectively, in 2002/03. The GRP of the SFR region comprised approximately 1.0 per cent of the SA GSP in that year and had increased 1.1 per cent in 2004/05.

References

- Australian Bureau of Statistics (ABS) 2006a *Regional Population Growth, Australia and New Zealand, 2004/05*, Cat. No. 3218.0, Canberra, February.
- Australian Bureau of Statistics 2006b, *Population by Age and Sex: Australia*, Cat. No. 3235.0.55.001, Canberra, June.
- Australian Bureau of Statistics 2006c, *Consumer Price Index*, Cat. No. 6401.0, Canberra July.
- Australian Bureau of Statistics 2006d *Building Approvals, Australia*, Cat. No. 8731.0, Canberra, August.
- Australian Bureau of Statistics 2006e *Tourist Accommodation, Small Area Data*, Cat. No. 8635.4.55.001, Canberra, March.
- Australian Bureau of Statistics 2006f *Motor Vehicle Census, Australia*, Cat No 9309.0, Canberra, March.
- Australian Bureau of Statistics 2005a *National Regional Profiles*, Cat. No. 1379.0.55.001, Canberra, March.
- Australian Bureau of Statistics 2005b, *Australian National Accounts: State Accounts, 2004/05*, Cat No 5220.0, Canberra, November.
- Australian Bureau of Statistics 2005c, *Motor Vehicle Census, Australia, Mar 2005*, Cat No 9309.0, Canberra, November.
- Australian Bureau of Statistics 2004, *Regional Statistics, South Australia*, Cat. No. 1362.4, Canberra, October.
- Australian Bureau of Statistics 2002, *Australian Business Register Counts of Single Business Locations, ANZSIC Industry Division by Postcode, Jun 2001*, Cat. No. 8136.0.55.001, Canberra, Australia.
- Australian Bureau of Statistics 2001, *Integrated Regional Database: The Geographical Statistics Platform, Version 2000*, Cat No 1353.0, Canberra.
- Australian Taxation Office (ATO) 2006, *Taxation Statistics*, Canberra, May.
- Department of Employment and Workplace Relations (DEWR) 2006, *Small Area Labor Markets*, Canberra, May.
- Department of Further Education, Employment, Science and Technology (DFEEST) 2005, *Southern Flinders Regional Profile*, South Australia, May
- Econsearch 2005, Preparation of Economic Models for the Regional Development Boards of South Australia, report prepared for the Office of Regional Affairs, December.
- Primary Industries and Resources South Australia (PIRSA) 2005, *The 2004/05 Food South Australia Scorecard*, South Australia.
- Primary Industries and Resources South Australia 2006, *Population Projection Enquiry System*, accessed via www.planning.sa.gov.au.

Disclaimer

We have prepared the above report exclusively for the use and benefit of our client. Neither the firm nor any employee of the firm undertakes responsibility in any way whatsoever to any person (other than to the above mentioned client) in respect of the report including any errors or omissions therein however caused.